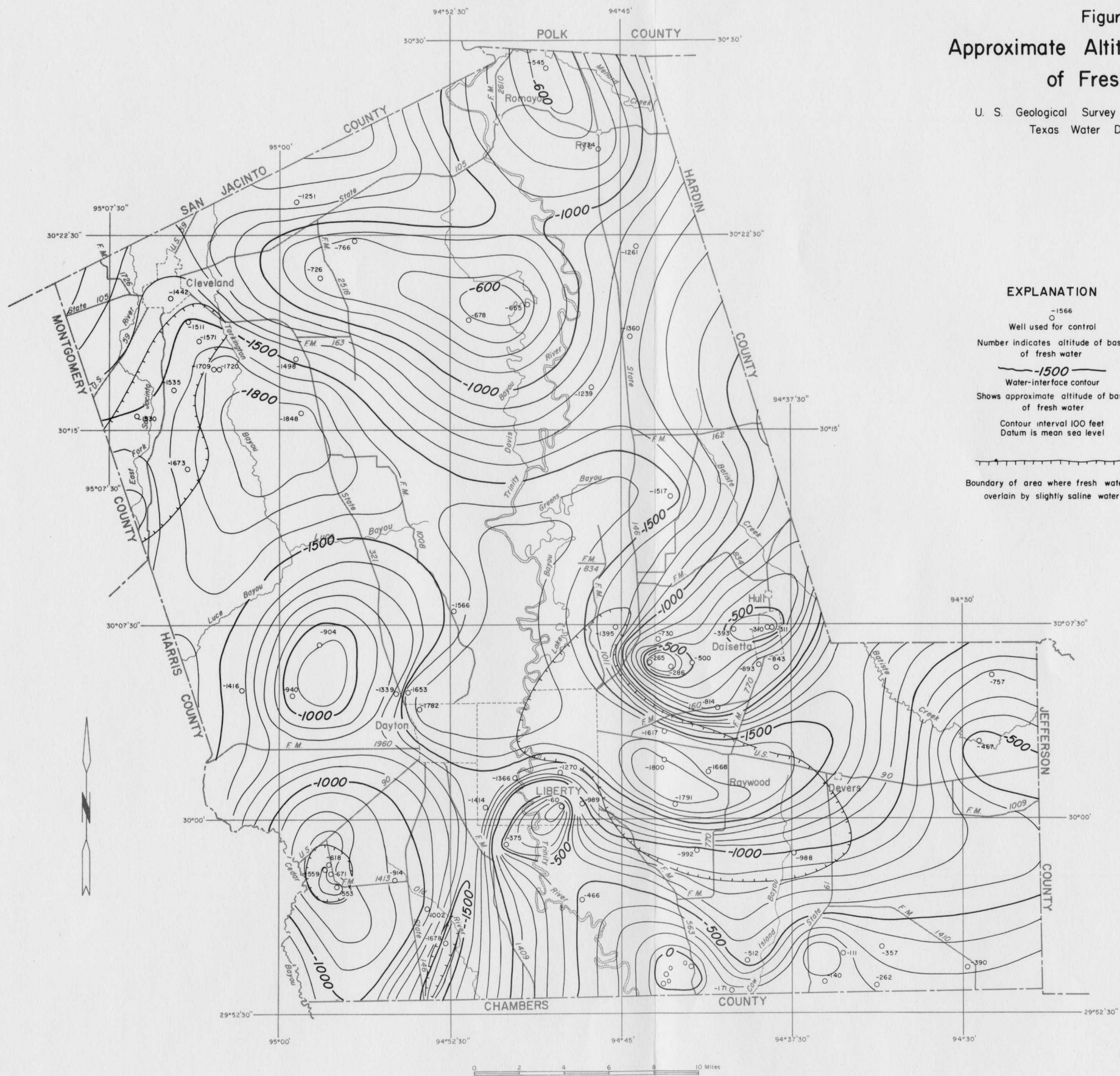


Figure 13 Approximate Altitude of the Base of Fresh Water

U. S. Geological Survey in cooperation with the
Texas Water Development Board



EXPLANATION

○ -1566
Well used for control

Number indicates altitude of base of fresh water

— -1500 —
Water-interface contour
Shows approximate altitude of base of fresh water

Contour interval 100 feet
Datum is mean sea level

— — — — —
Boundary of area where fresh water is overlain by slightly saline water