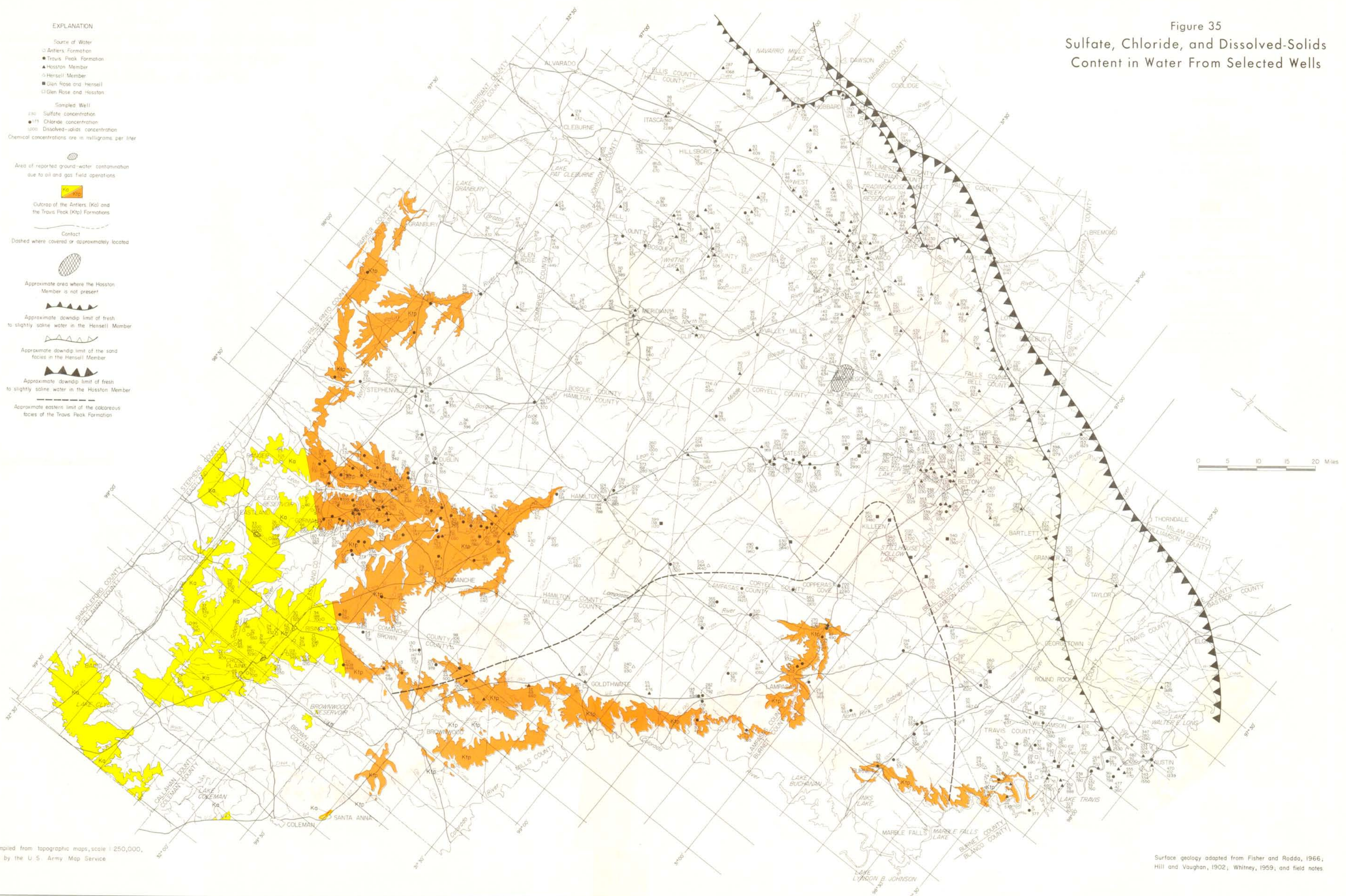


Figure 35
Sulfate, Chloride, and Dissolved-Solids
Content in Water From Selected Wells

- EXPLANATION**
- Source of Water
 - Antlers Formation
 - Travis Peak Formation
 - ▲ Hosston Member
 - ◊ Hensell Member
 - Glen Rose and Hensell
 - Glen Rose and Hosston
 - Sampled Well
 - Sulfate concentration
 - Chloride concentration
 - Dissolved-solids concentration
- Chemical concentrations are in milligrams per liter
- Area of reported ground-water contamination due to oil and gas field operations
 - Outcrop of the Antlers (Ka) and the Travis Peak (Ktp) Formations
 - Contact
 - Dashed where covered or approximately located
 - Approximate area where the Hosston Member is not present
 - Approximate downdip limit of fresh to slightly saline water in the Hensell Member
 - Approximate downdip limit of the sand facies in the Hensell Member
 - Approximate downdip limit of fresh to slightly saline water in the Hosston Member
 - Approximate eastern limit of the calcareous facies of the Travis Peak Formation



Base compiled from topographic maps, scale 1:250,000, produced by the U. S. Army Map Service

Surface geology adapted from Fisher and Rodda, 1966, Hill and Vaughan, 1902; Whitney, 1959, and field notes