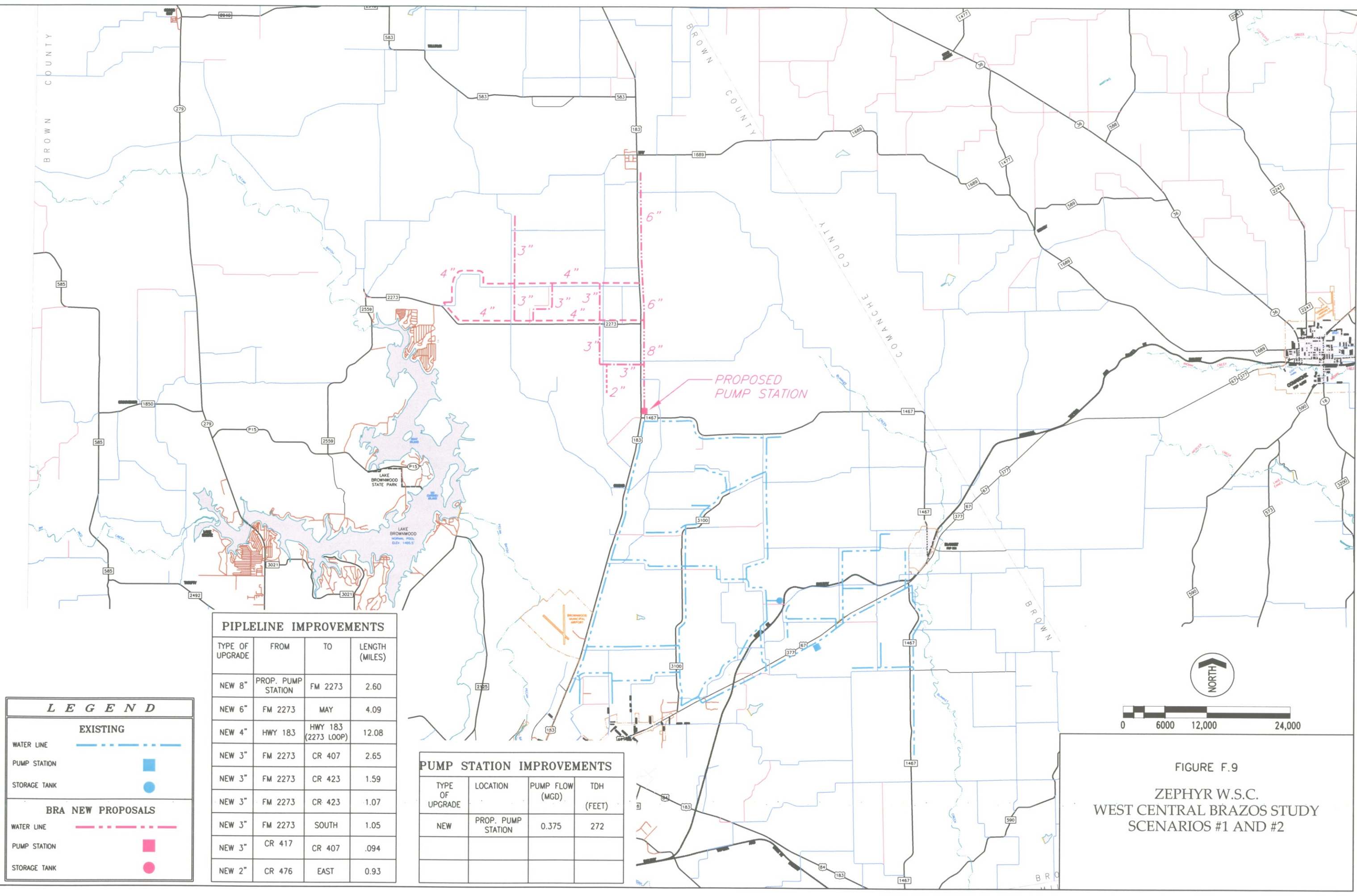


ACAD: Rel 15.06s (LMS Tech) User: CAM
 [BRA02372]N:\WR\JM-REPORT\BRASTUDY\BRAZOS-STUDIES\ZEPHYRSCENARIO1AND2.DWG LAYOUT: 11x17
 FEB 10, 2004 7:30:49 A.M. LTS: 2000.00 TWIST: 0
 2 REFERENCE FILES: N:\WR\JM-REPORT\BRASTUDY\BRAZOS-STUDIES\BROWN-COUNTY and N:\WR\JM-REPORT\BRASTUDY\BRAZOS-STUDIES\COMANCHE-COUNTY



| LEGEND | |
|--------------------------|--|
| EXISTING | |
| WATER LINE | |
| PUMP STATION | |
| STORAGE TANK | |
| BRA NEW PROPOSALS | |
| WATER LINE | |
| PUMP STATION | |
| STORAGE TANK | |

| PIPELINE IMPROVEMENTS | | | |
|-----------------------|--------------------|---------------------|----------------|
| TYPE OF UPGRADE | FROM | TO | LENGTH (MILES) |
| NEW 8" | PROP. PUMP STATION | FM 2273 | 2.60 |
| NEW 6" | FM 2273 | MAY | 4.09 |
| NEW 4" | HWY 183 | HWY 183 (2273 LOOP) | 12.08 |
| NEW 3" | FM 2273 | CR 407 | 2.65 |
| NEW 3" | FM 2273 | CR 423 | 1.59 |
| NEW 3" | FM 2273 | CR 423 | 1.07 |
| NEW 3" | FM 2273 | SOUTH | 1.05 |
| NEW 3" | CR 417 | CR 407 | .094 |
| NEW 2" | CR 476 | EAST | 0.93 |

| PUMP STATION IMPROVEMENTS | | | |
|---------------------------|--------------------|-----------------|------------|
| TYPE OF UPGRADE | LOCATION | PUMP FLOW (MGD) | TDH (FEET) |
| NEW | PROP. PUMP STATION | 0.375 | 272 |

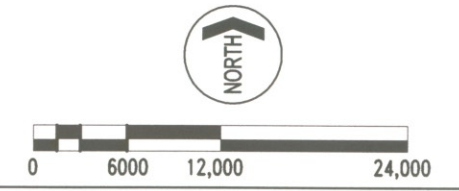


FIGURE F.9
 ZEPHYR W.S.C.
 WEST CENTRAL BRAZOS STUDY
 SCENARIOS #1 AND #2