

Base modified from U.S. Geological Survey digital data  
Scales 1:250,000 (county boundaries) and 1:2,000,000 (hydrography)  
Universal Transverse Mercator projection, Datum NAD 83  
Zone 14

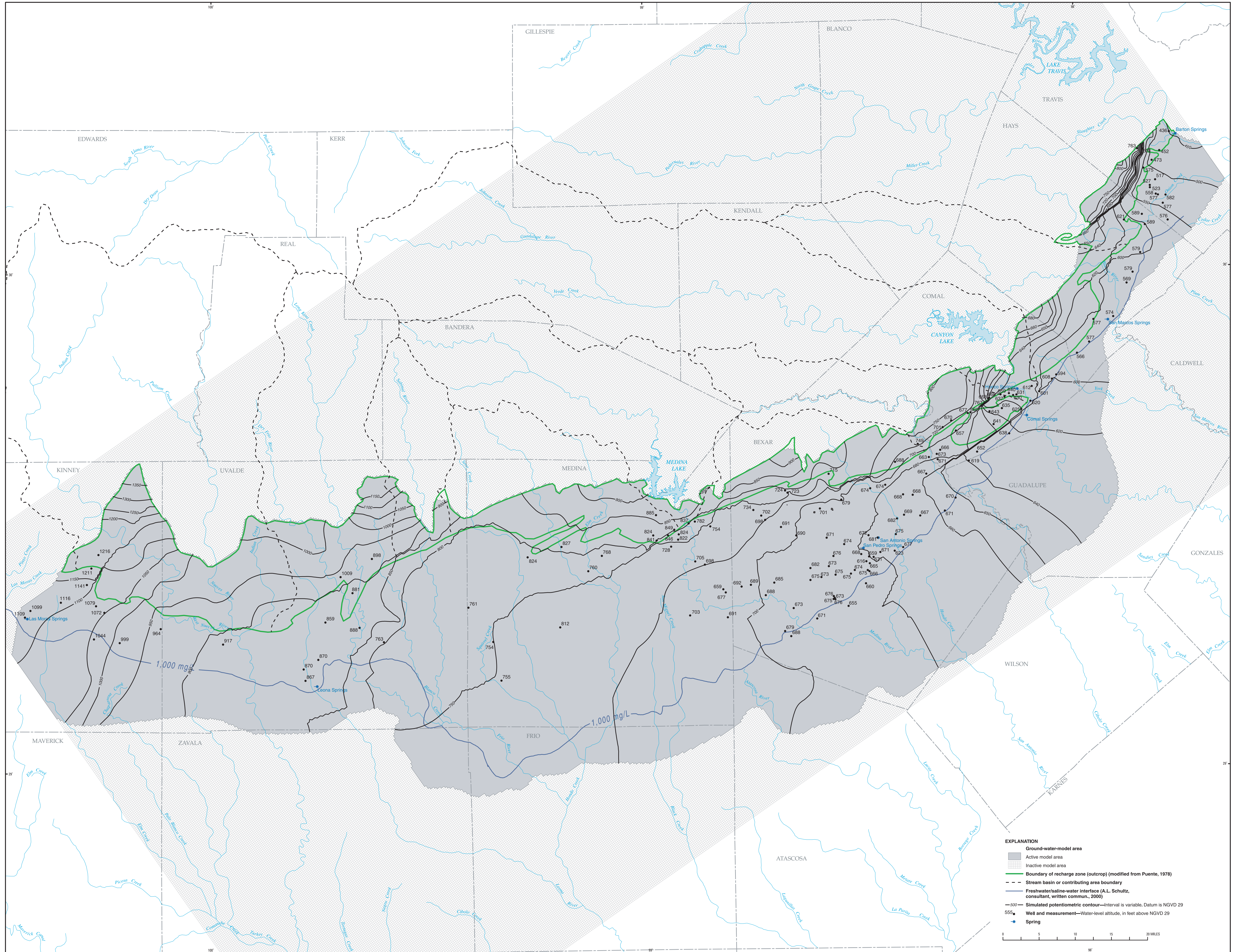
MAP SHOWING LOCATIONS OF EDWARDS AQUIFER WELLS WITH WATER LEVELS (HYDRAULIC HEADS) USED TO CALIBRATE EDWARDS AQUIFER MODEL (CALIBRATION TARGET WELLS), SAN ANTONIO REGION, TEXAS

By  
R.J. Lindgren, A.R. Dutton, S.D. Hovorka, S.R.H. Worthington, and Scott Painter  
2004

**EXPLANATION**

- Ground-water-model area
  - Active model area
  - Inactive model area
- Boundary of recharge zone (outcrop) (modified from Puente, 1978)
- Stream basin or contributing area boundary
- Freshwater/saline-water interface (A.L. Schultz, consultant, written commun., 2000)
- Calibration target well and identification number
- Calibration target well with hydrograph and identification number—See figures 15-17
- Spring

0 5 10 15 20 MILES



Base modified from U.S. Geological Survey digital data  
Scales 1:250,000 (county boundaries) and 1:2,000,000 (hydrography)  
Universal Transverse Mercator projection, Datum NAD 83  
Zone 14

MAP SHOWING MEASURED WATER-LEVEL ALTITUDE IN EDWARDS AQUIFER, 1939-46, AND SIMULATED ALTITUDE OF POTENTIOMETRIC SURFACE, STEADY-STATE SIMULATION, EDWARDS AQUIFER MODEL, SAN ANTONIO REGION, TEXAS

By  
R.J. Lindgren, A.R. Dutton, S.D. Hovorka, S.R.H. Worthington, and Scott Painter  
2004

