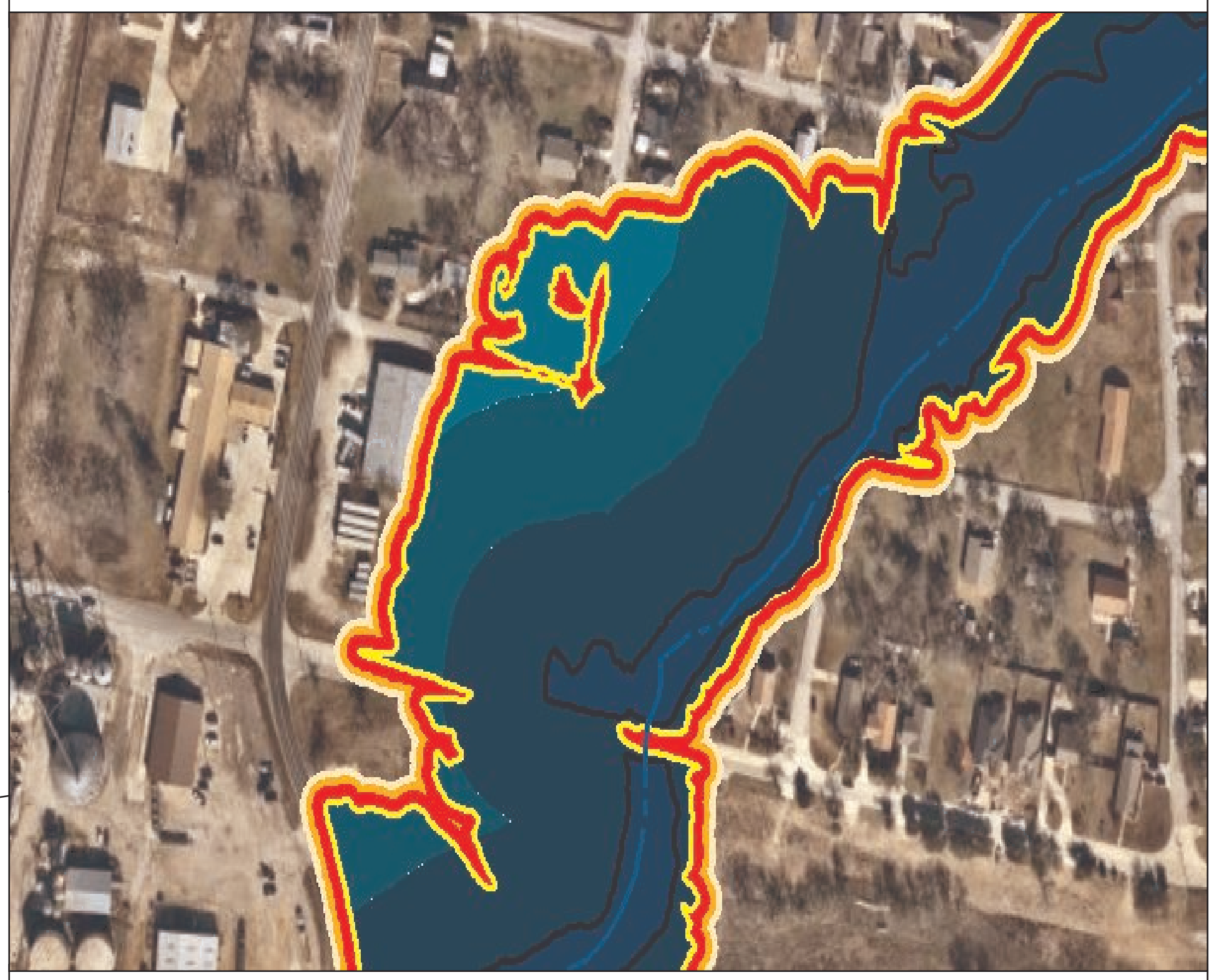


POTENTIAL FUTURE CONDITIONS FLOOD RISK - LARGE SCALE



The Potential Future Conditions Floodplain Quilt symbolized to show the graduated zones of potential minimum and maximum extents for the future mapping at a larger scale.

Region 3 - Trinity

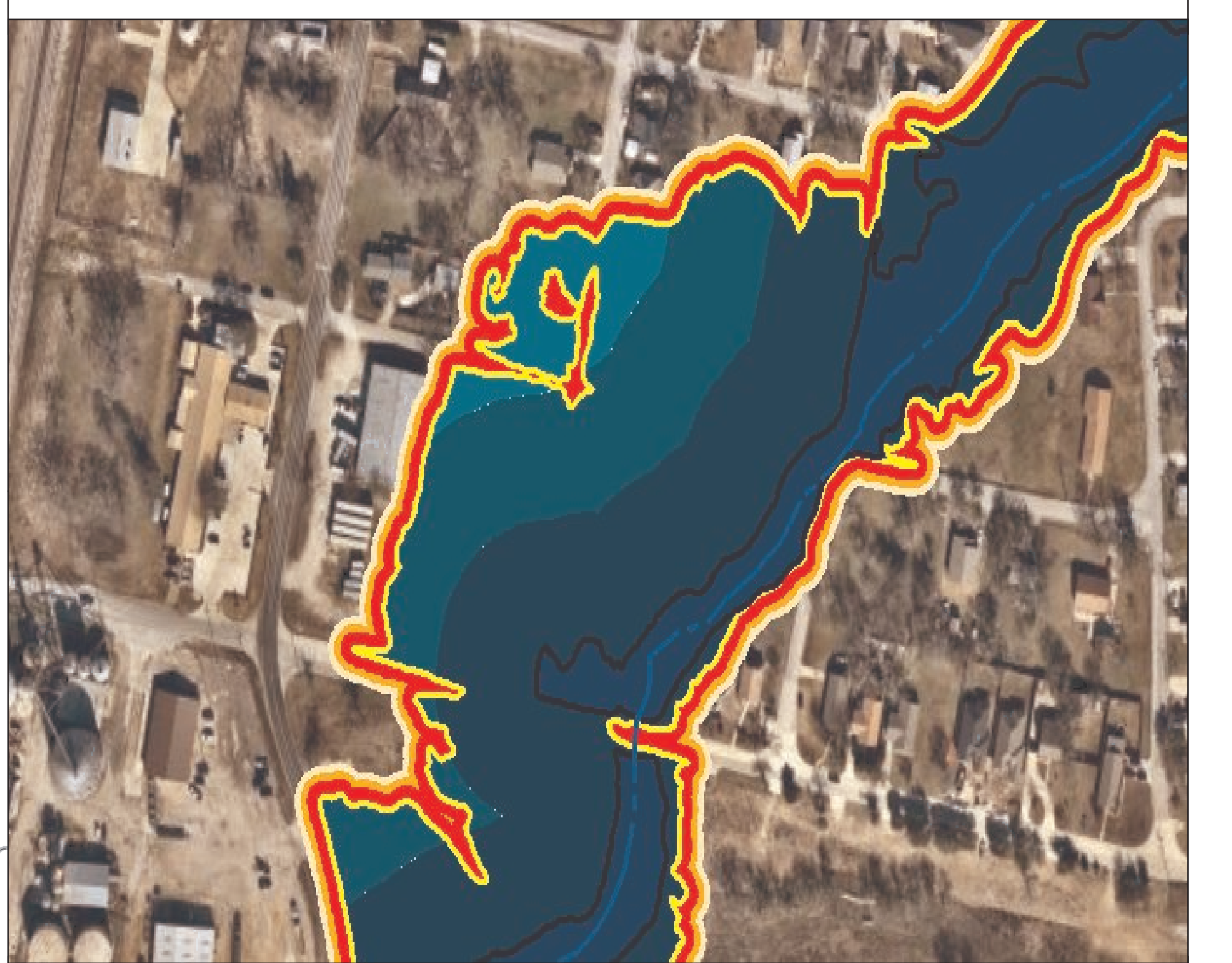
**Map 8
Future Conditions Flood
Hazard**

Region 3 - Trinity

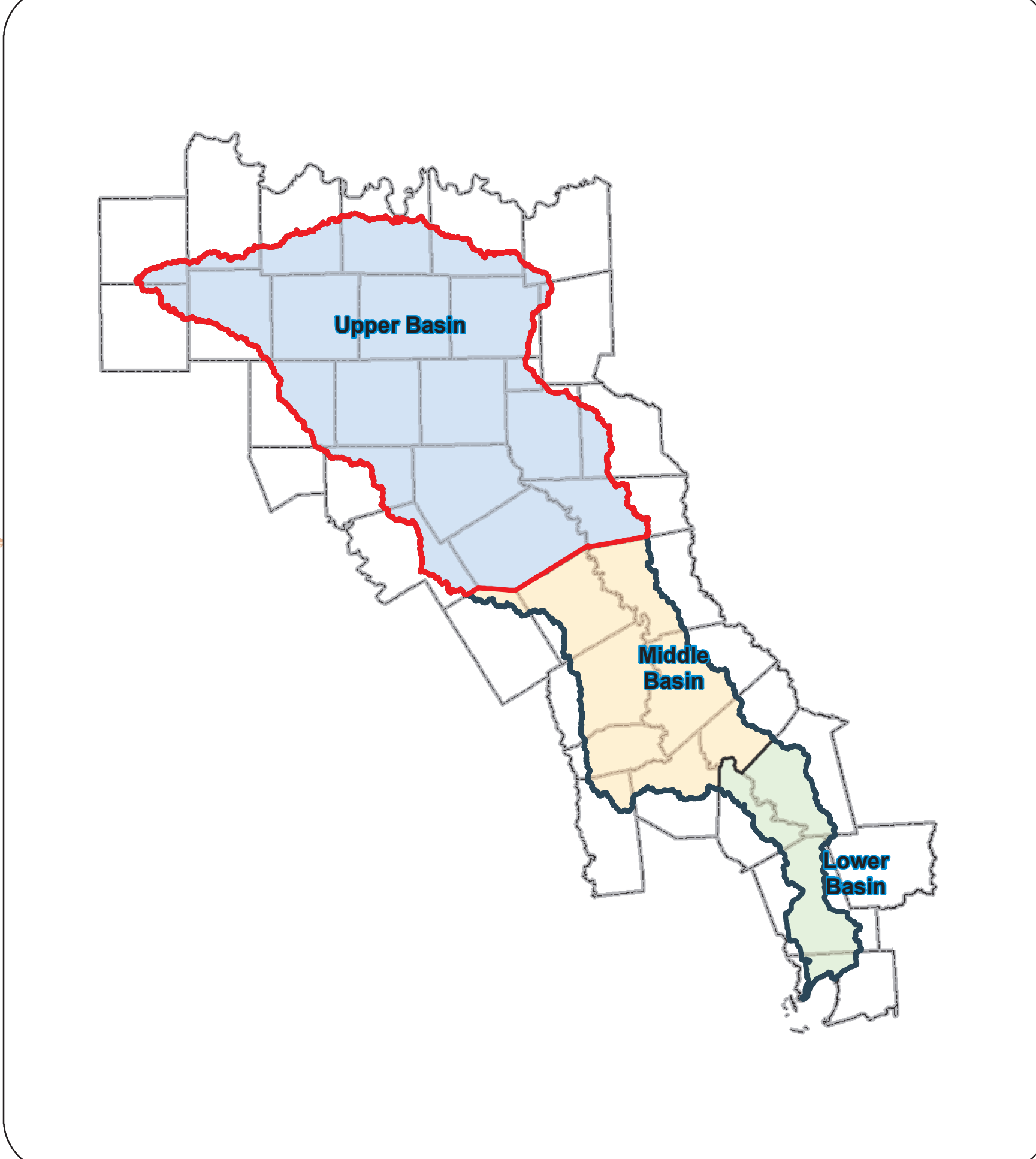
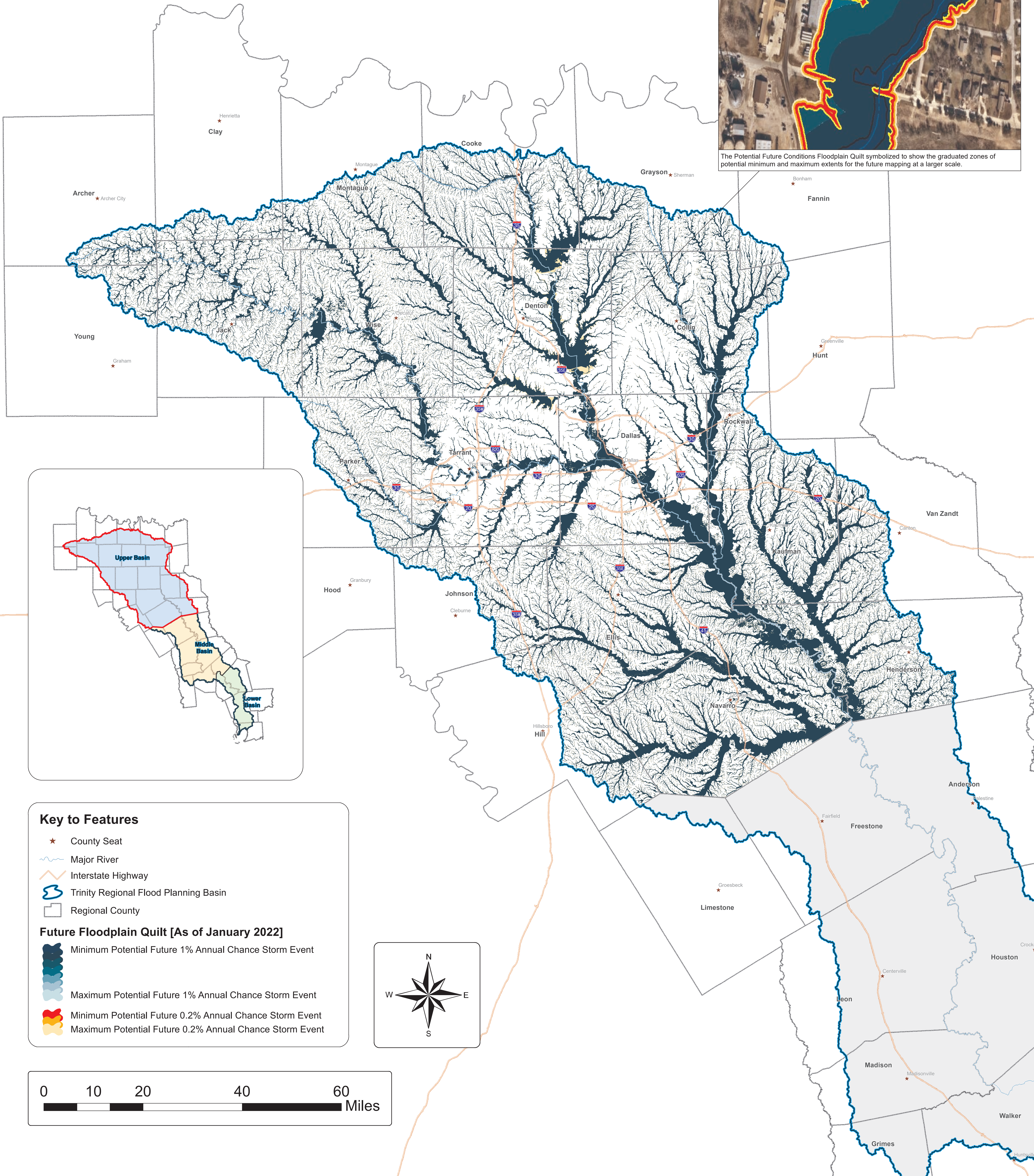
Map 8.1

Future Condition Flood Hazard (Upper Basin)

POTENTIAL FUTURE CONDITIONS FLOOD RISK - LARGE SCALE



The Potential Future Conditions Floodplain Quilt symbolized to show the graduated zones of potential minimum and maximum extents for the future mapping at a larger scale.

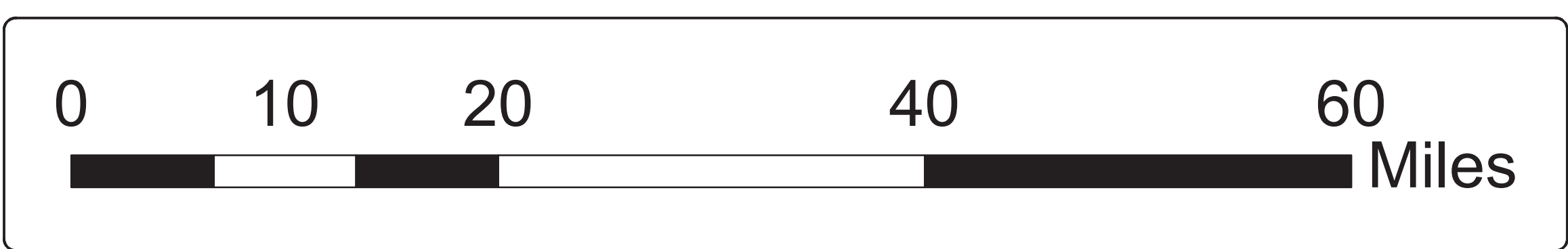
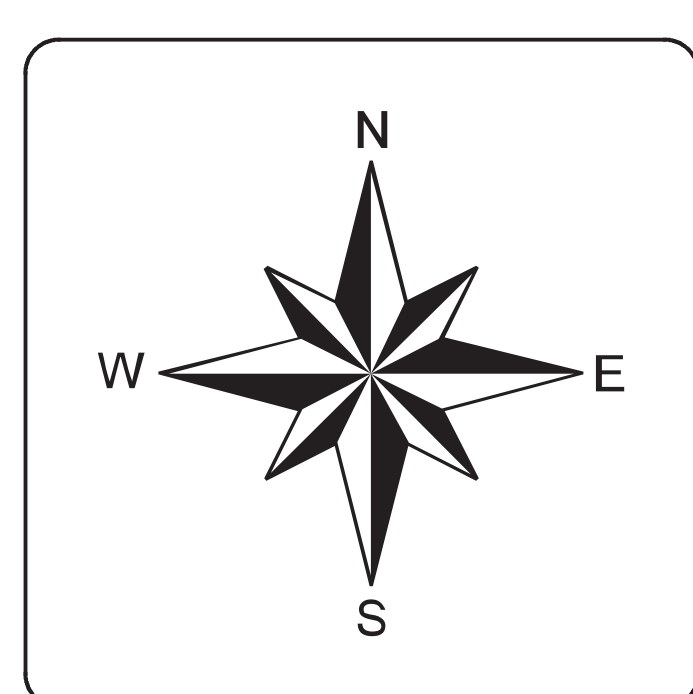


Key to Features

- ★ County Seat
- Major River
- Interstate Highway
- Trinity Regional Flood Planning Basin
- Regional County

Future Floodplain Quilt [As of January 2022]

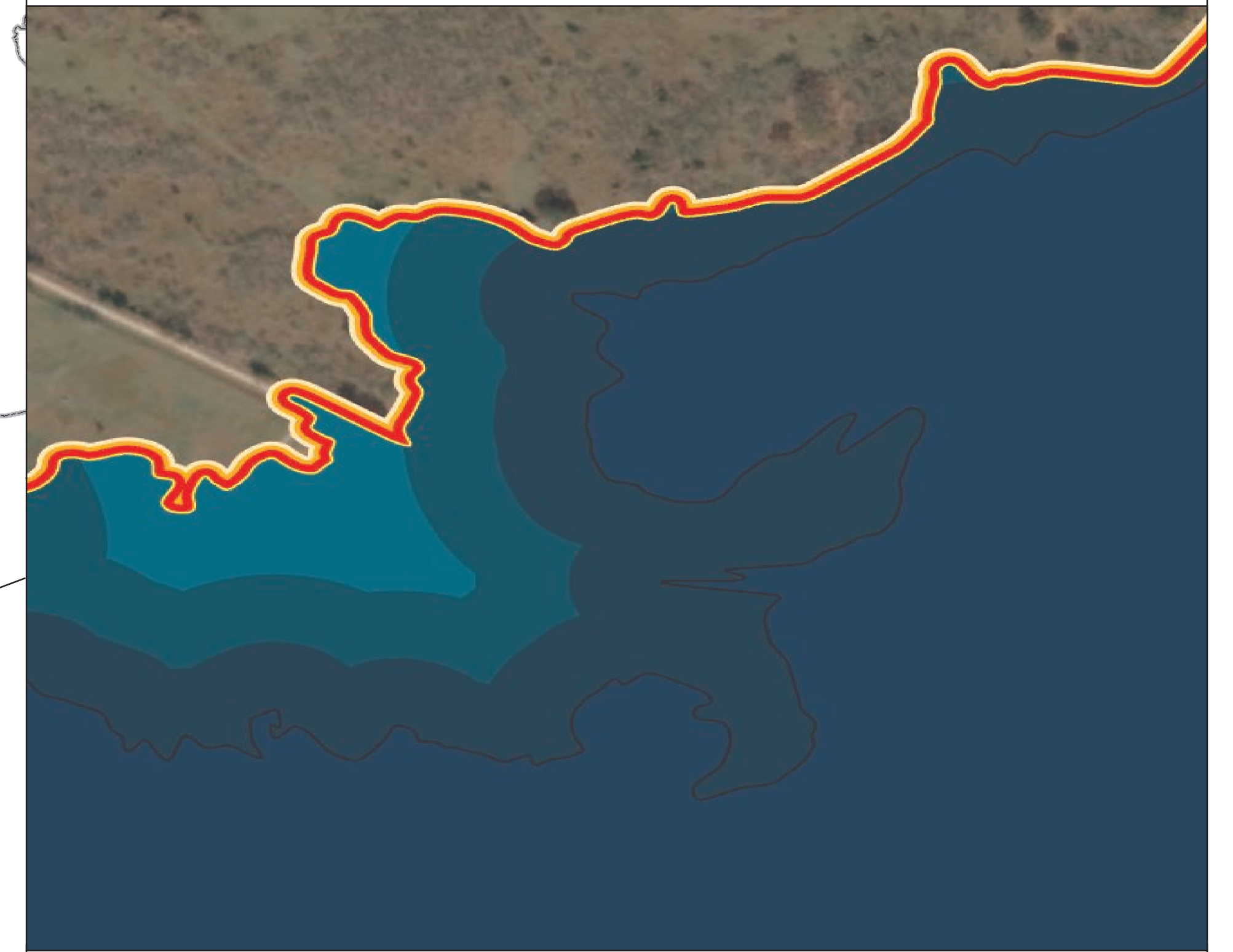
- Minimum Potential Future 1% Annual Chance Storm Event
- Maximum Potential Future 1% Annual Chance Storm Event
- Minimum Potential Future 0.2% Annual Chance Storm Event
- Maximum Potential Future 0.2% Annual Chance Storm Event



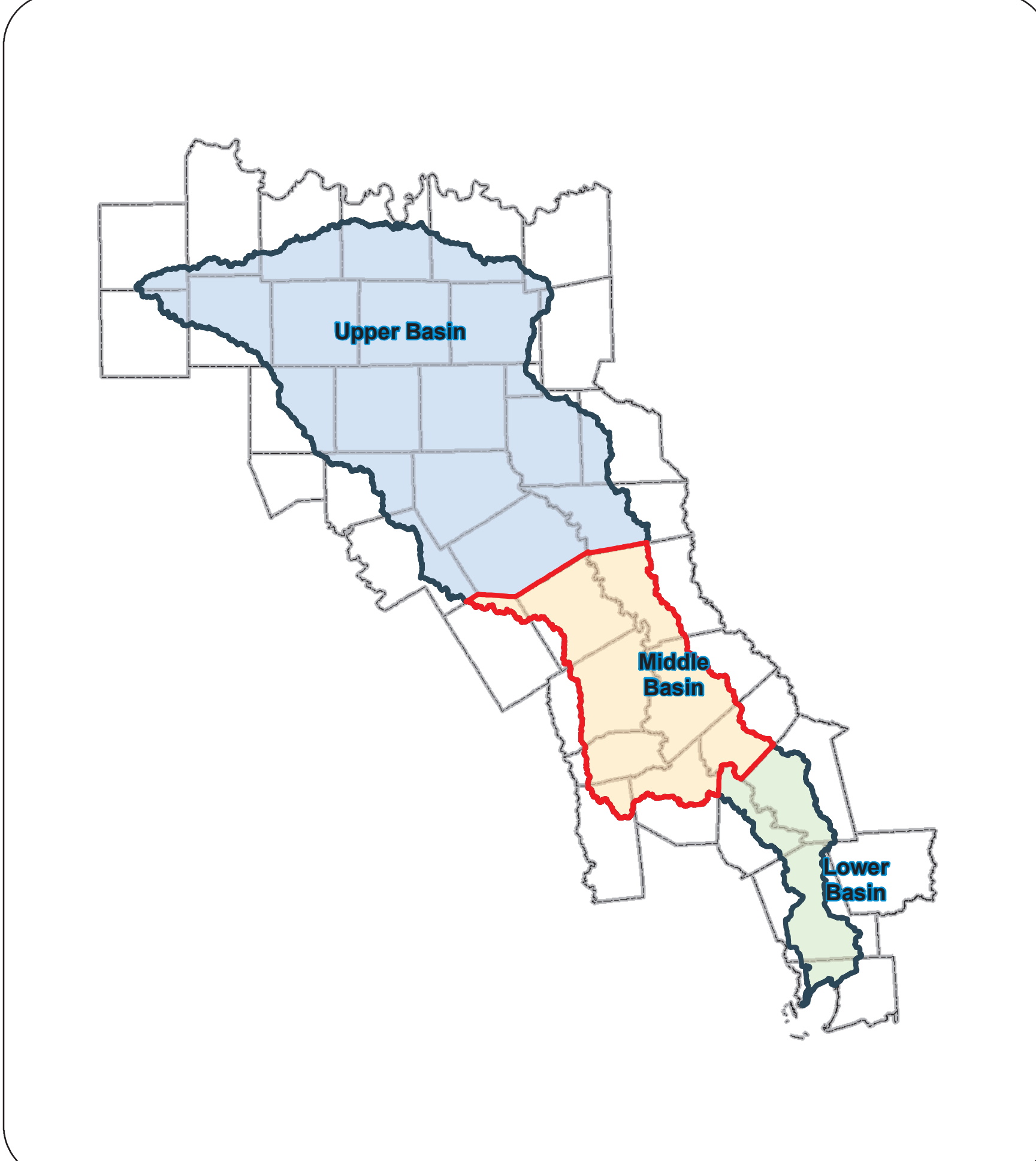
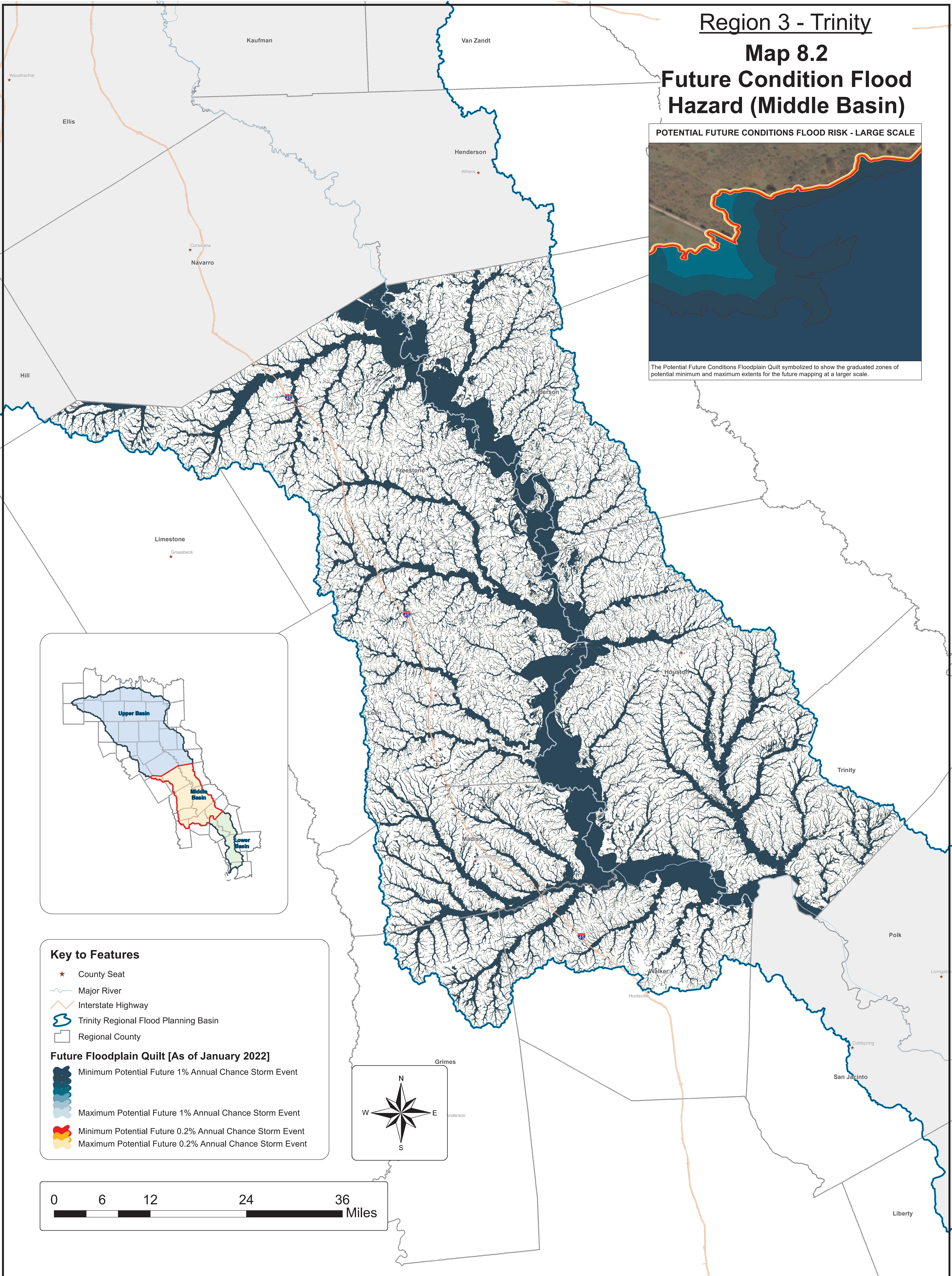
Region 3 - Trinity

Map 8.2 Future Condition Flood Hazard (Middle Basin)

POTENTIAL FUTURE CONDITIONS FLOOD RISK - LARGE SCALE



The Potential Future Conditions Floodplain Quilt symbolized to show the graduated zones of potential minimum and maximum extents for the future mapping at a larger scale.

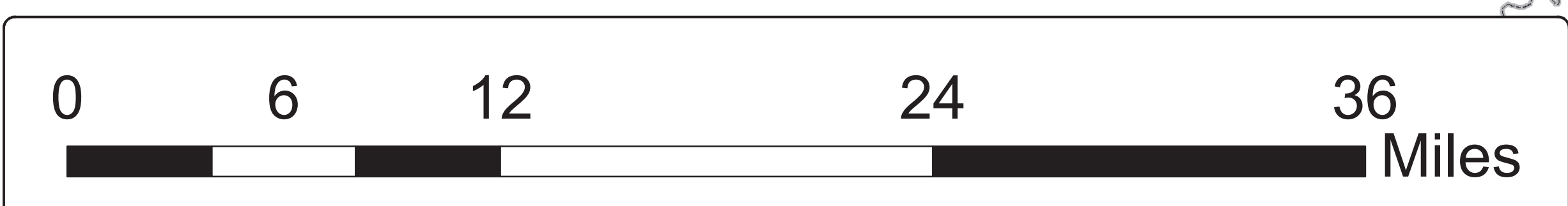
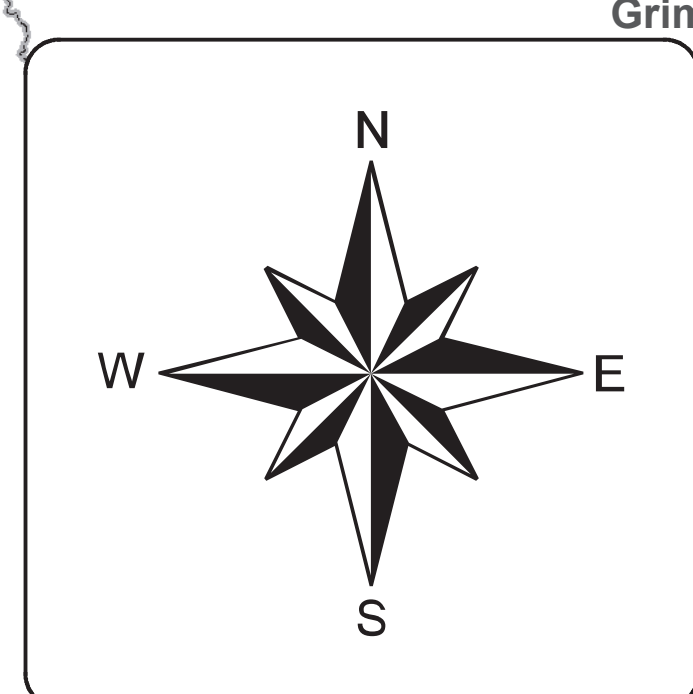


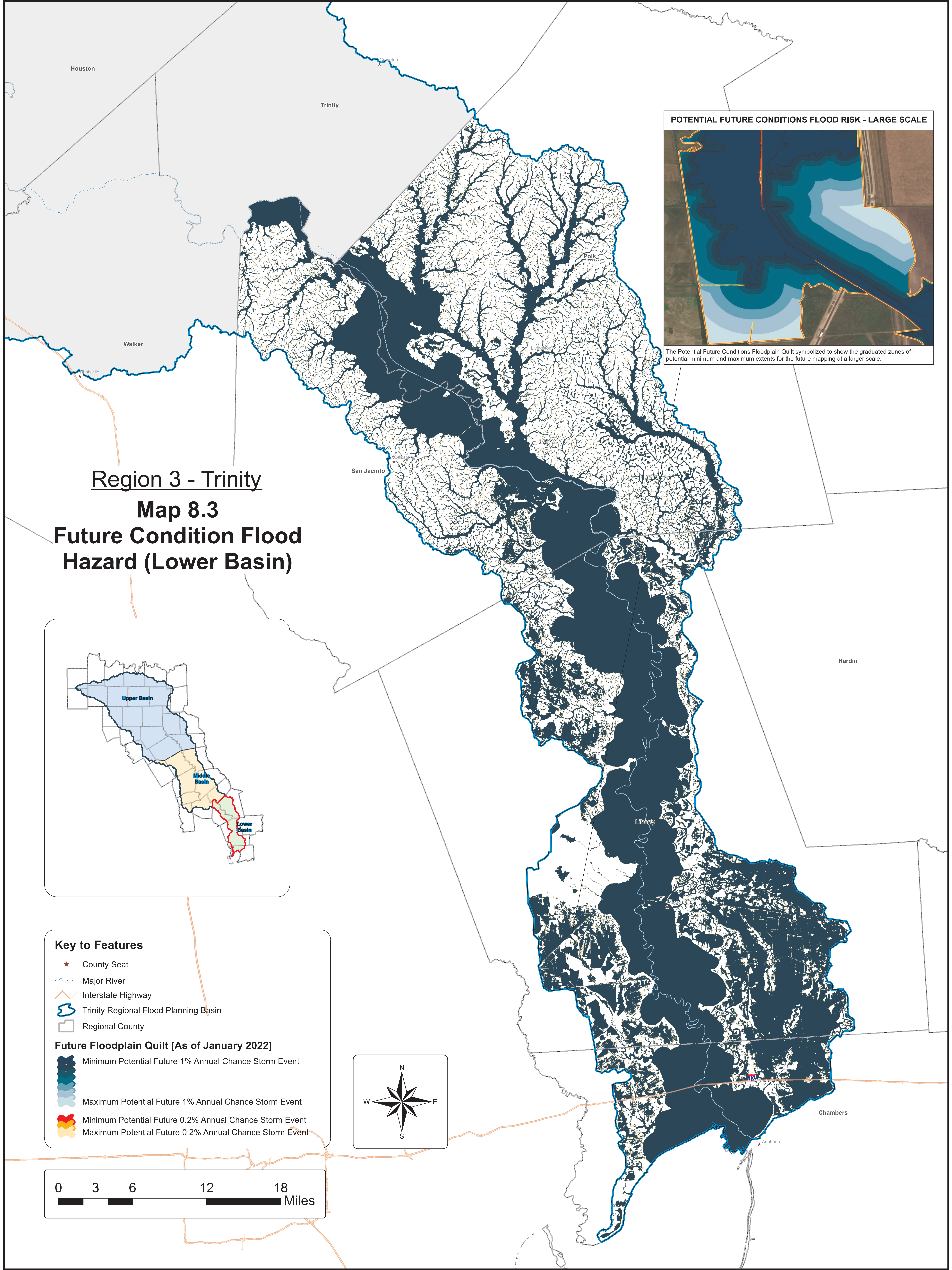
Key to Features

- ★ County Seat
- Major River
- Interstate Highway
- Trinity Regional Flood Planning Basin
- Regional County

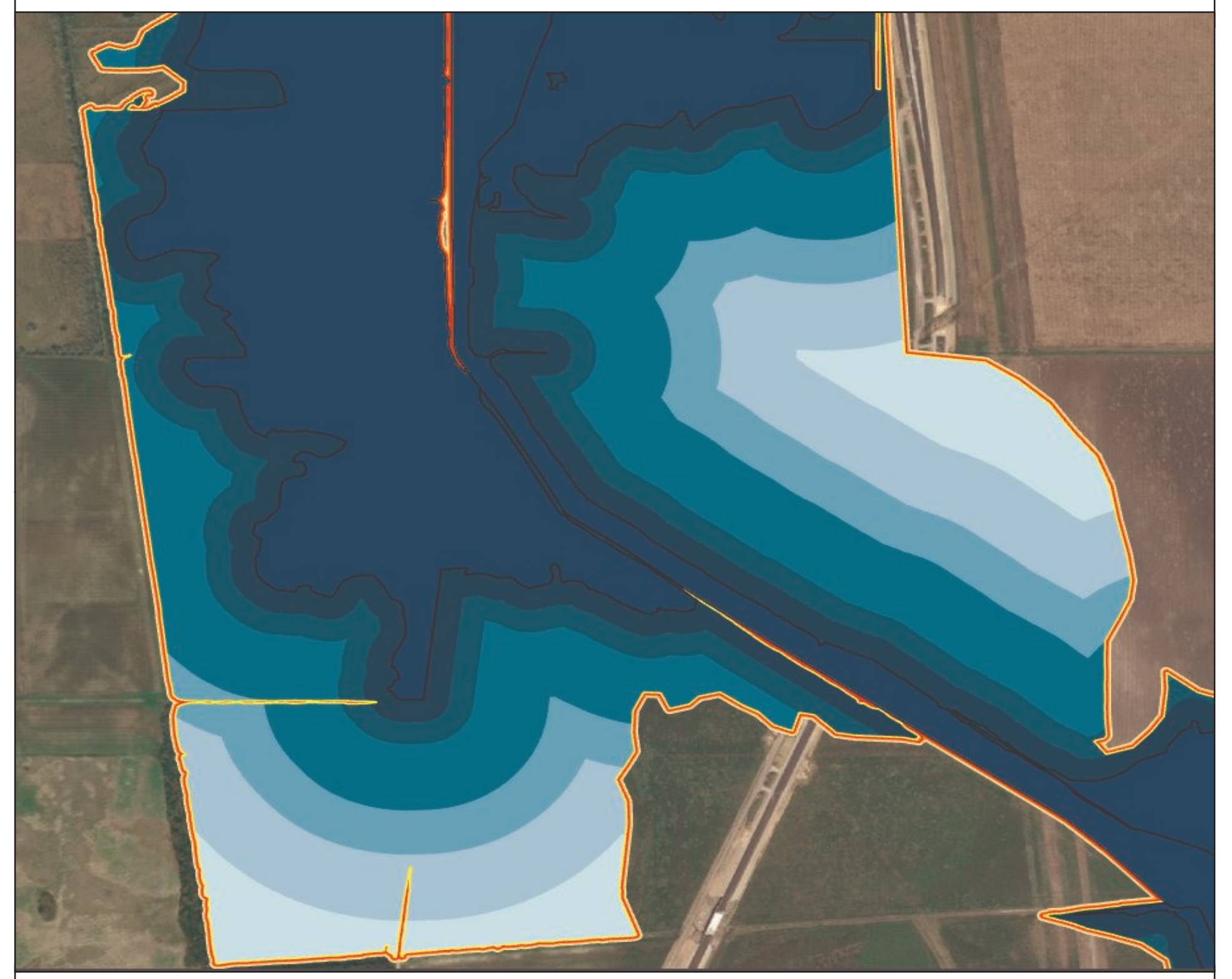
Future Floodplain Quilt [As of January 2022]

- Minimum Potential Future 1% Annual Chance Storm Event
- Maximum Potential Future 1% Annual Chance Storm Event
- Minimum Potential Future 0.2% Annual Chance Storm Event
- Maximum Potential Future 0.2% Annual Chance Storm Event



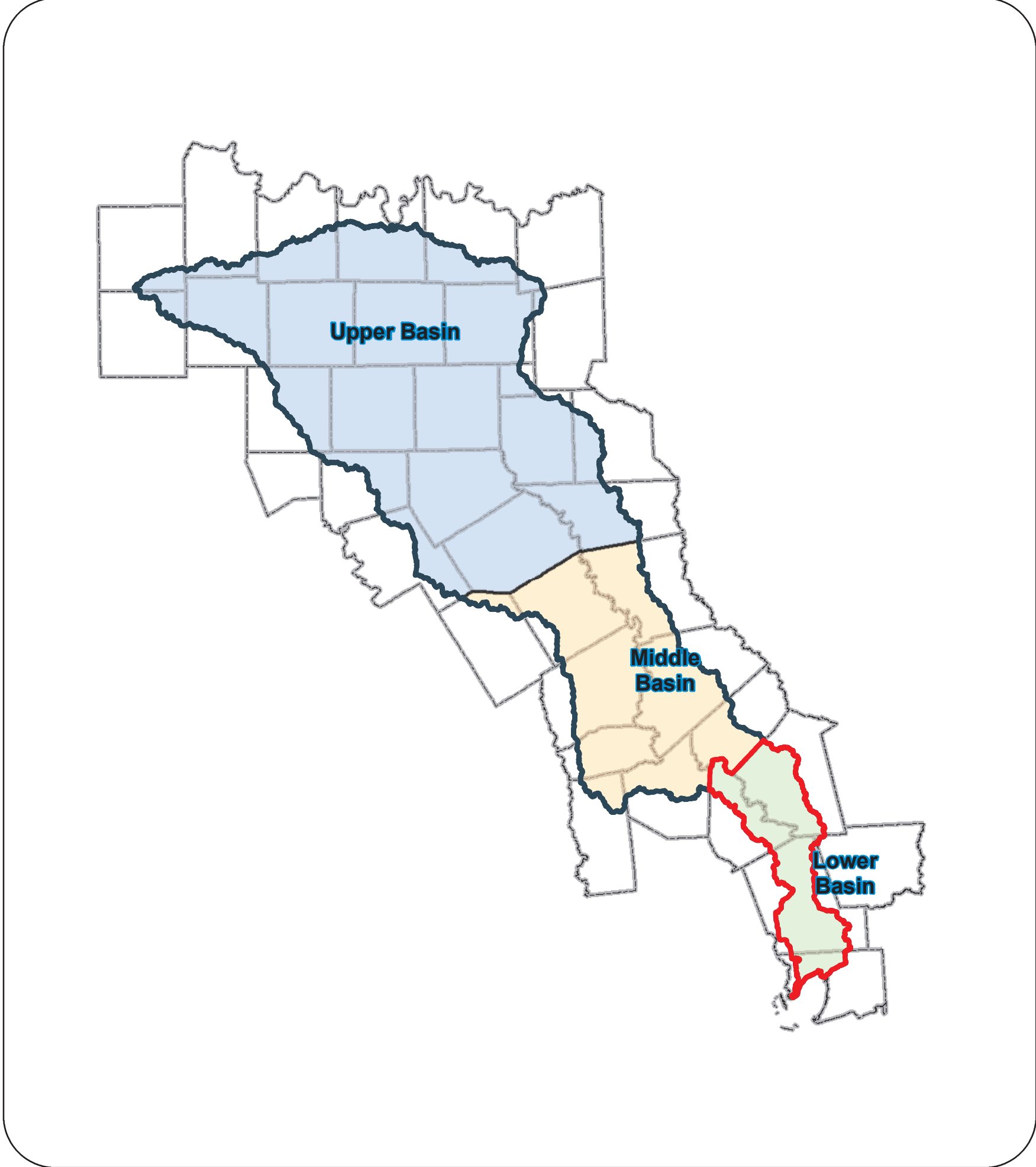


POTENTIAL FUTURE CONDITIONS FLOOD RISK - LARGE SCALE



The Potential Future Conditions Floodplain Quilt symbolized to show the graduated zones of potential minimum and maximum extents for the future mapping at a larger scale.

Region 3 - Trinity
Map 8.3
Future Condition Flood Hazard (Lower Basin)

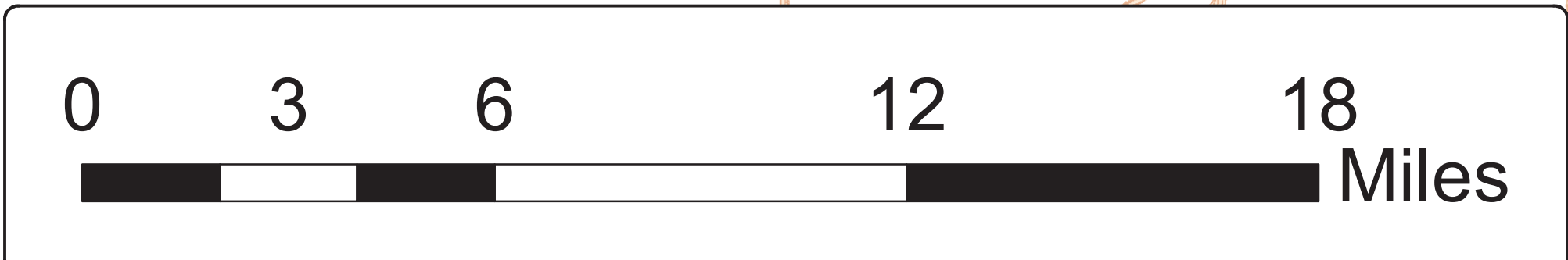
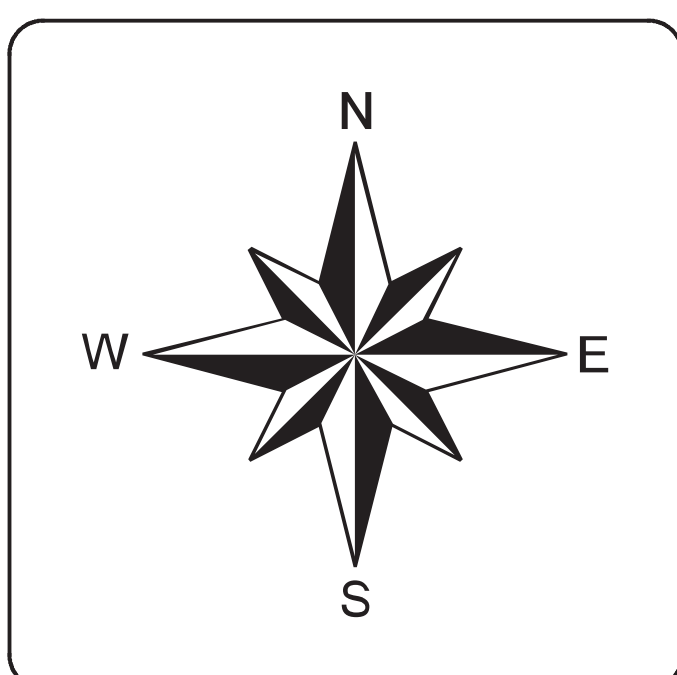


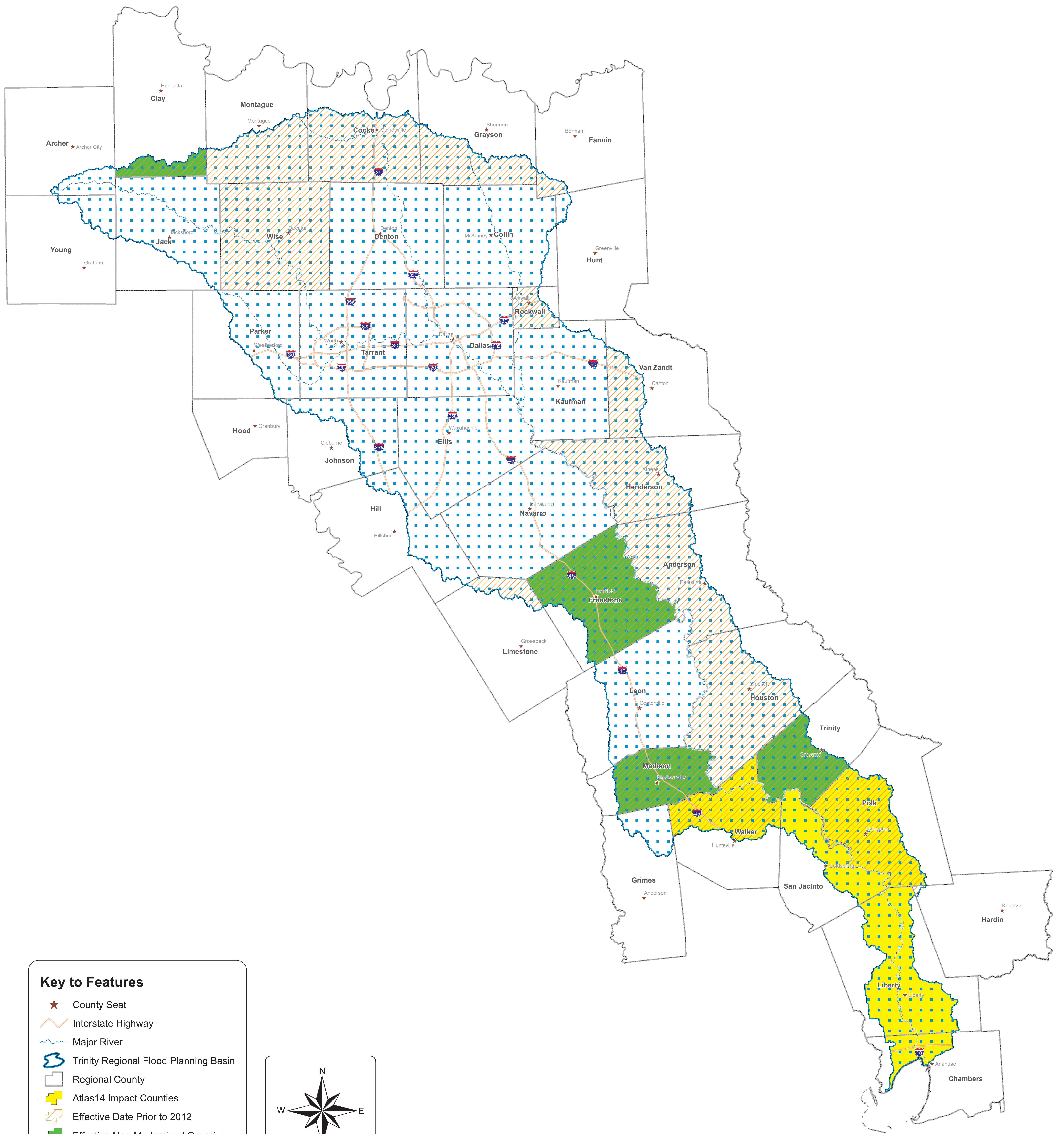
Key to Features

- ★ County Seat
- Major River
- Interstate Highway
- Trinity Regional Flood Planning Basin
- Regional County

Future Floodplain Quilt [As of January 2022]

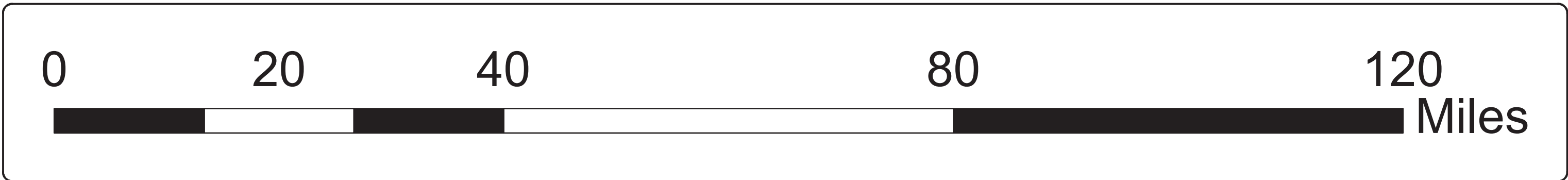
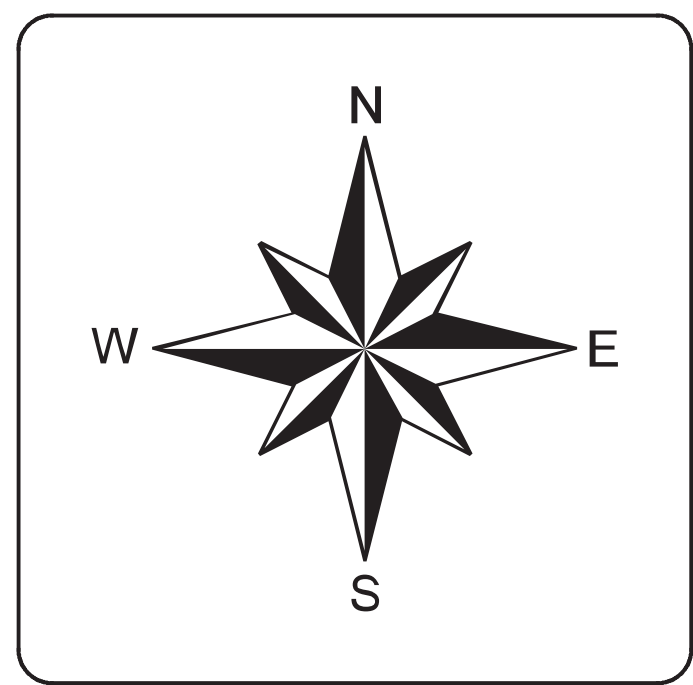
- Minimum Potential Future 1% Annual Chance Storm Event
- Maximum Potential Future 1% Annual Chance Storm Event
- Minimum Potential Future 0.2% Annual Chance Storm Event
- Maximum Potential Future 0.2% Annual Chance Storm Event





Key to Features

- ★ County Seat
- Interstate Highway
- Major River
- Trinity Regional Flood Planning Basin
- Regional County
- Atlas14 Impact Counties
- Effective Date Prior to 2012
- Effective Non-Modernized Counties
- No Detailed Future Modeling Study and/or Mapping



Region 3 - Trinity

**Map 9
Future Condition
Flood Hazard Gaps**



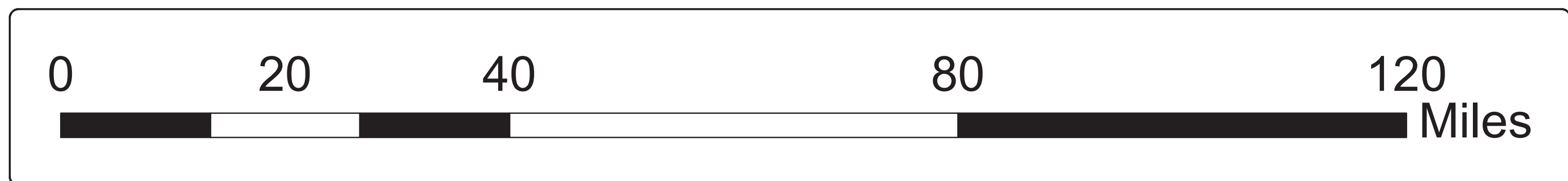
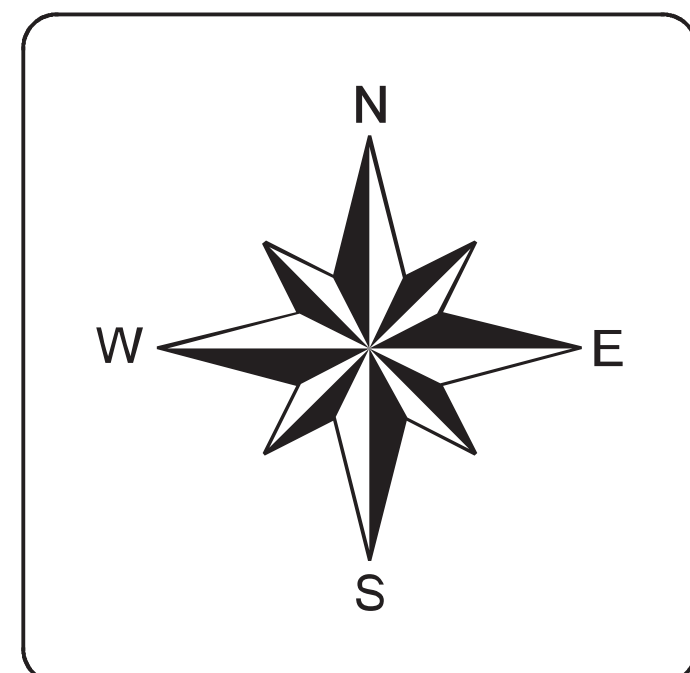
Key to Features

- ★ County Seat
- Major River
- Interstate Highway
- Trinity Regional Flood Planning Basin
- Regional County

Area of Expanded Risk*

- No Change
- 1% Annual Chance Storm Event Increase
- 0.2% Annual Chance Storm Event Increase

*No Change = Existing 100-year
 100-year Increase = Existing 500-year/Potential Future 100-year
 500-year Increase = Potential Future 500-year



Region 3 - Trinity

Map 10

Extent of Increase of Flood Hazard

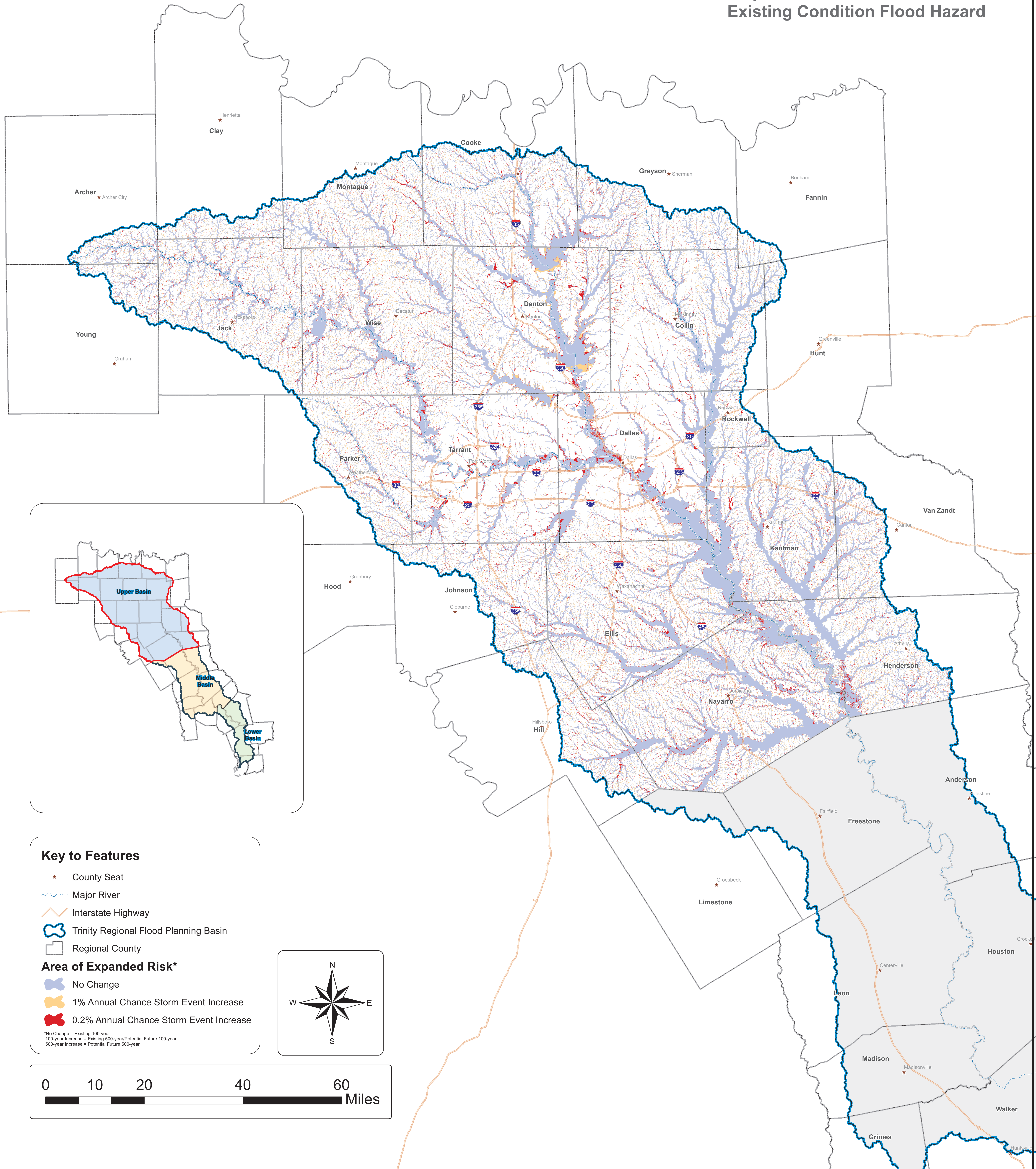
Comparison of Future Condition to Existing Condition Flood Hazard

Region 3 - Trinity

Map 10.1

Extent of Increase of Flood Hazard (Upper Basin)

Comparison of Future Condition to Existing Condition Flood Hazard

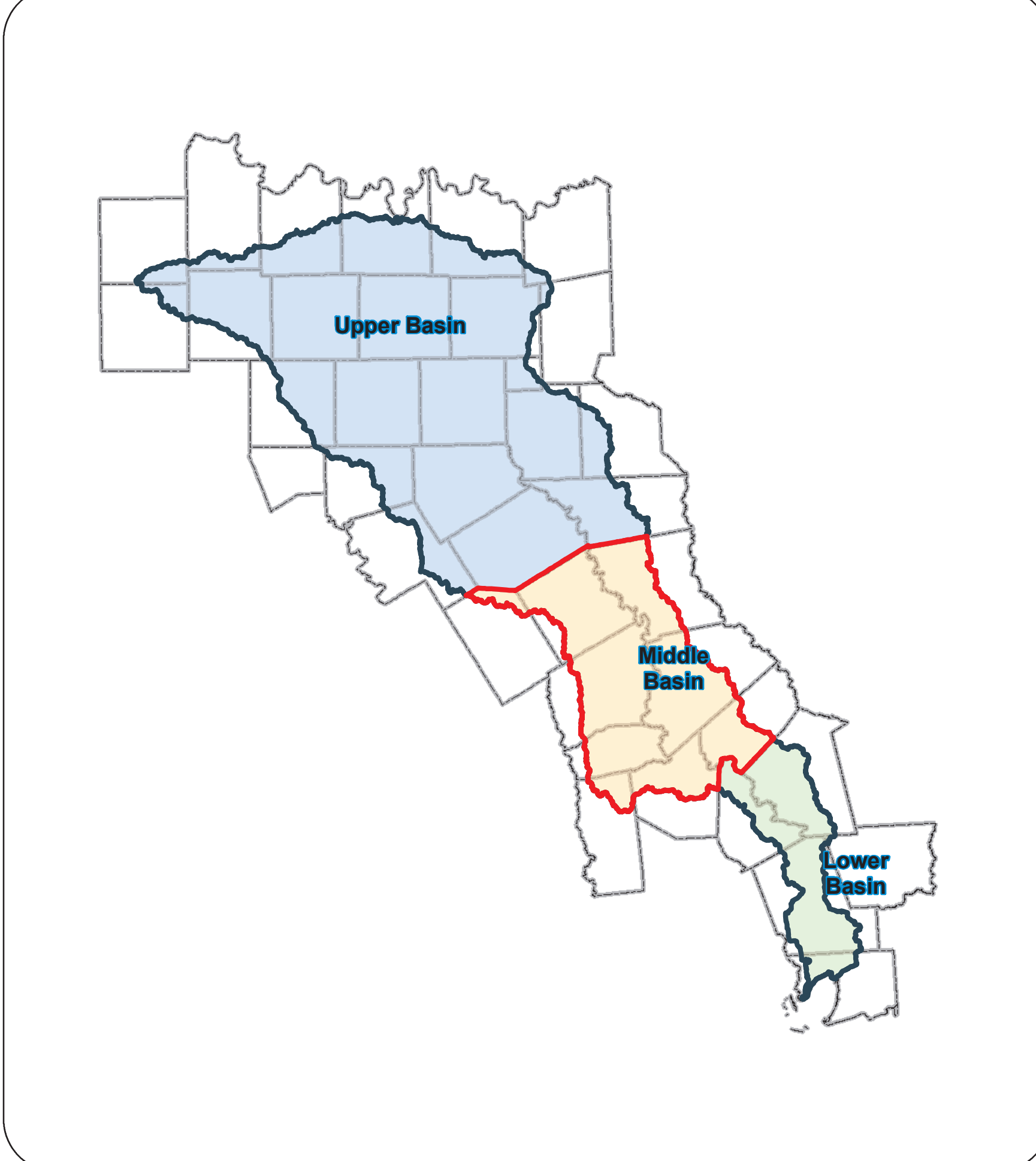
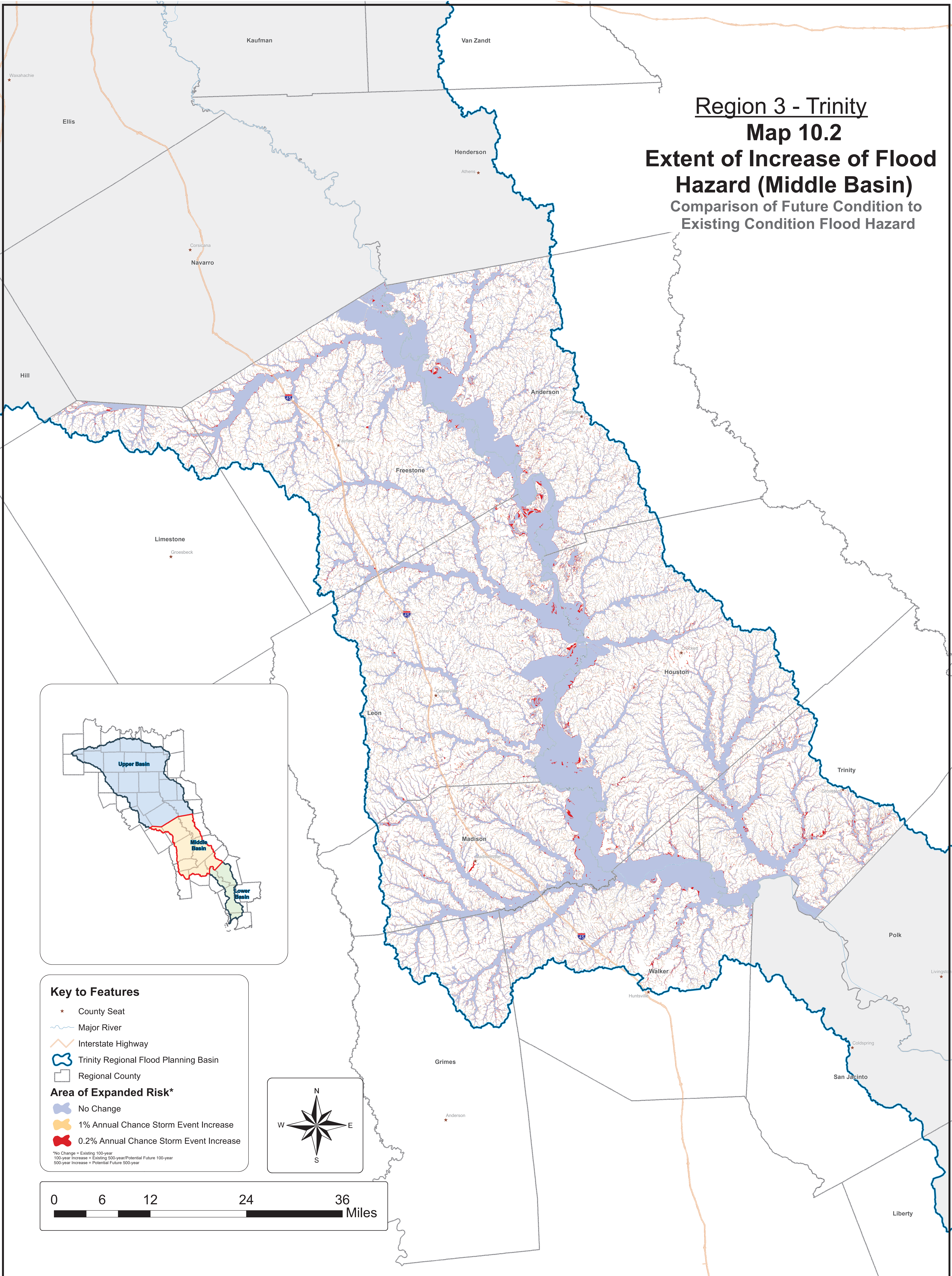


Region 3 - Trinity

Map 10.2

Extent of Increase of Flood Hazard (Middle Basin)

Comparison of Future Condition to Existing Condition Flood Hazard



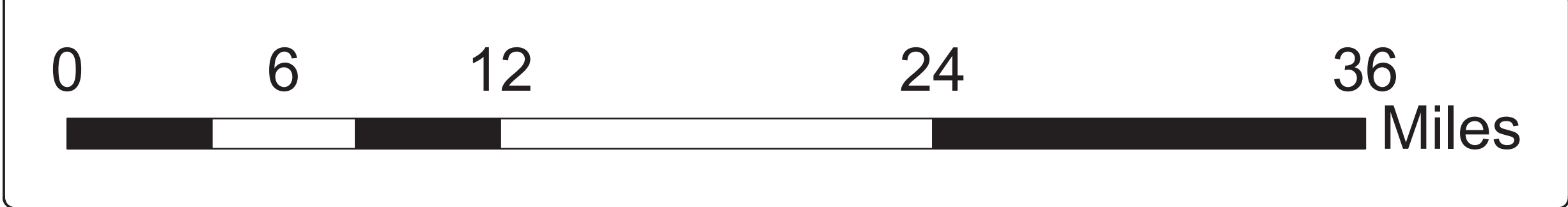
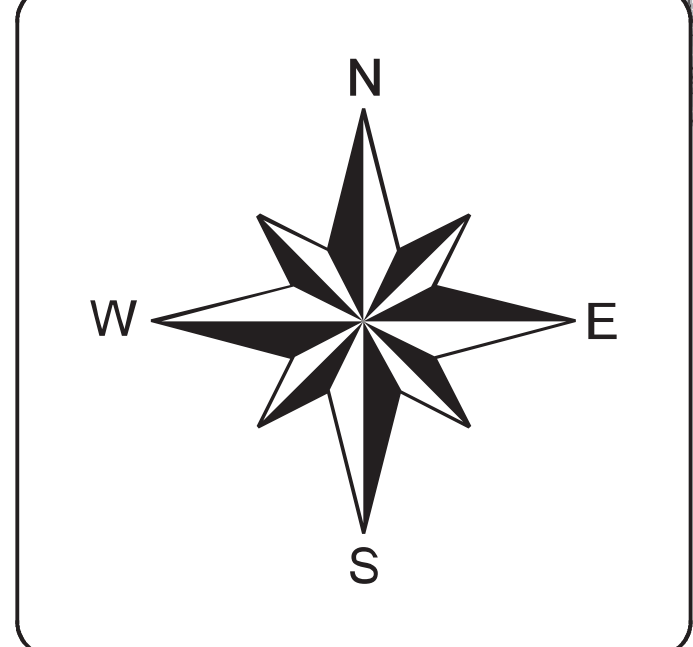
Key to Features

- ★ County Seat
- Major River
- Interstate Highway
- Trinity Regional Flood Planning Basin
- Regional County

Area of Expanded Risk*

- No Change
- 1% Annual Chance Storm Event Increase
- 0.2% Annual Chance Storm Event Increase

*No Change = Existing 100-year
100-year Increase = Existing 500-year/Potential Future 100-year
500-year Increase = Potential Future 500-year

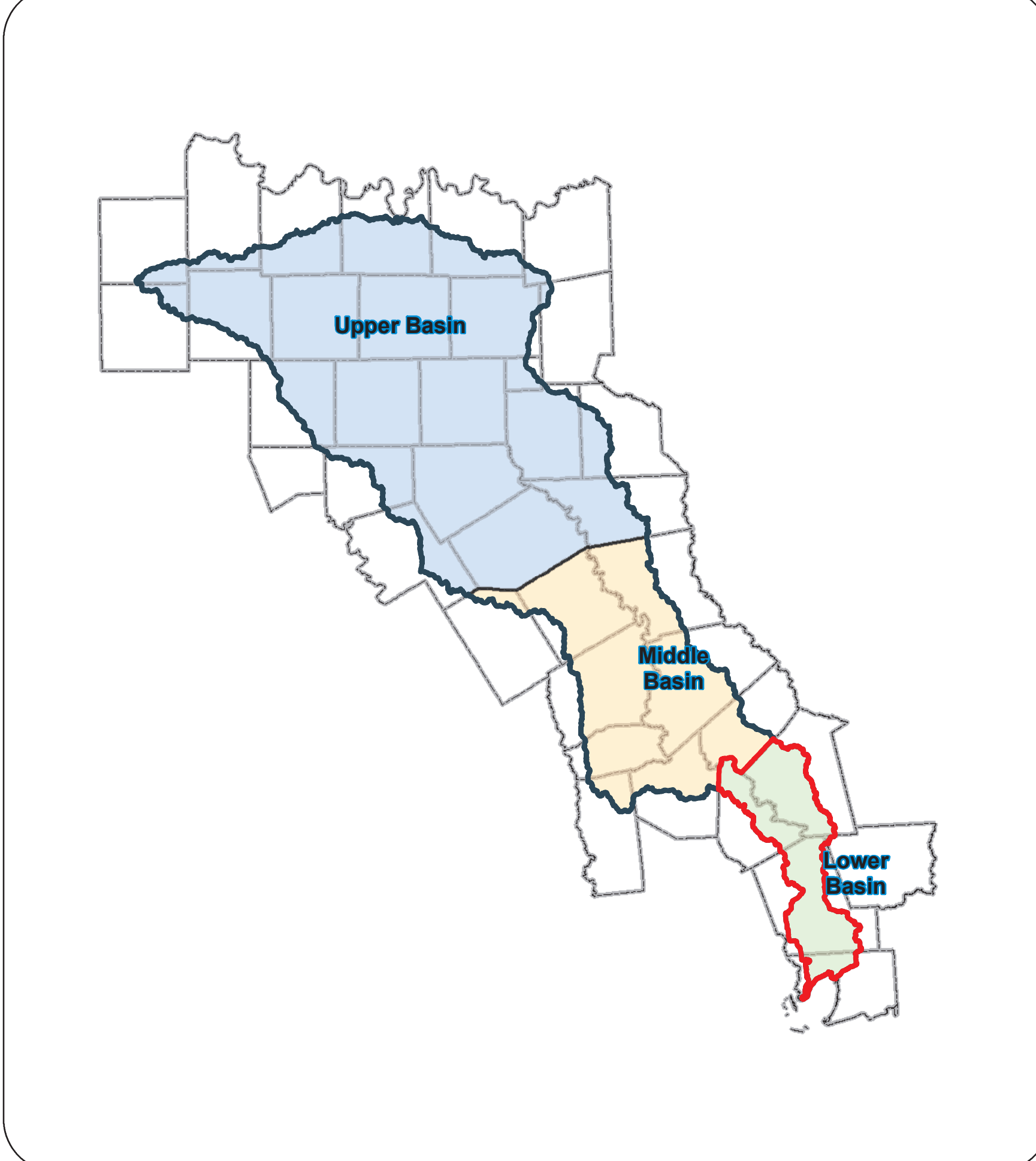
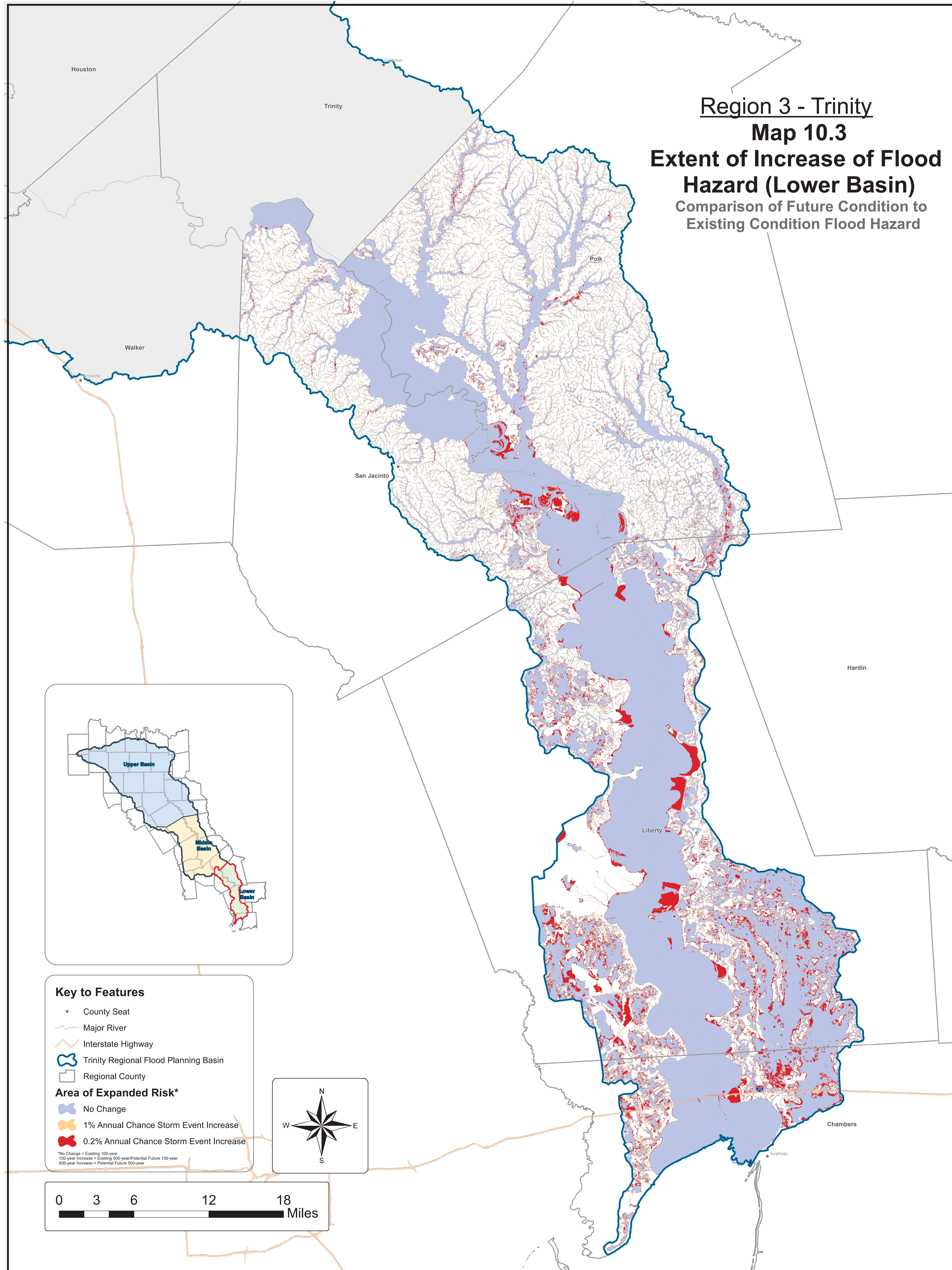


Region 3 - Trinity

Map 10.3

Extent of Increase of Flood Hazard (Lower Basin)

Comparison of Future Condition to Existing Condition Flood Hazard



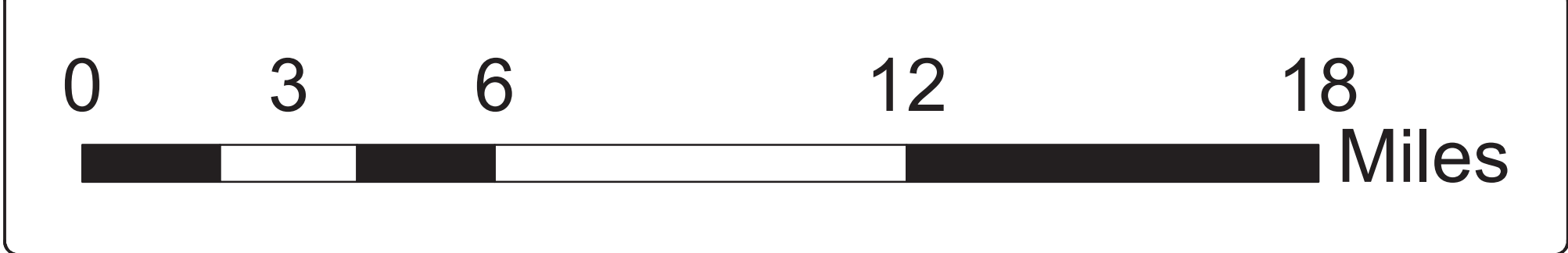
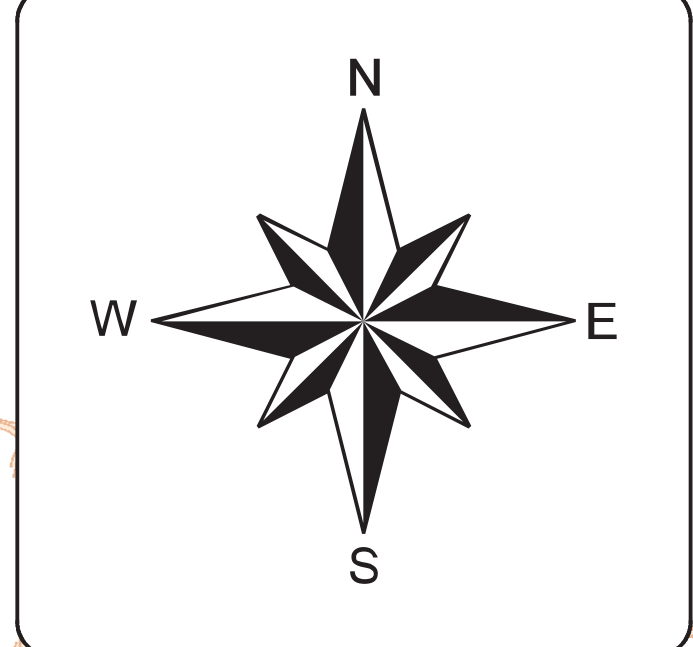
Key to Features

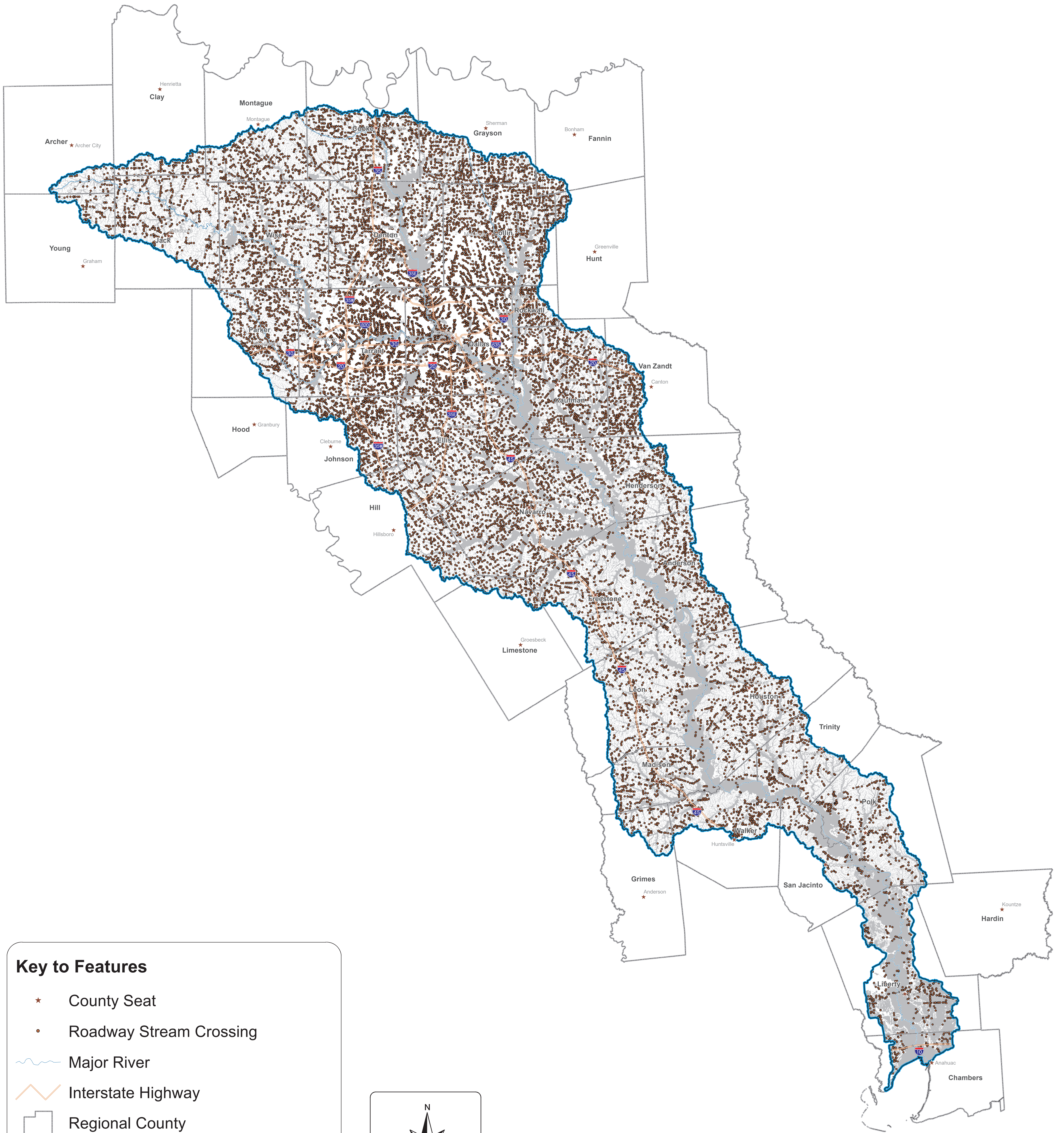
- ★ County Seat
- Major River
- Interstate Highway
- Trinity Regional Flood Planning Basin
- Regional County

Area of Expanded Risk*

- No Change
- 1% Annual Chance Storm Event Increase
- 0.2% Annual Chance Storm Event Increase

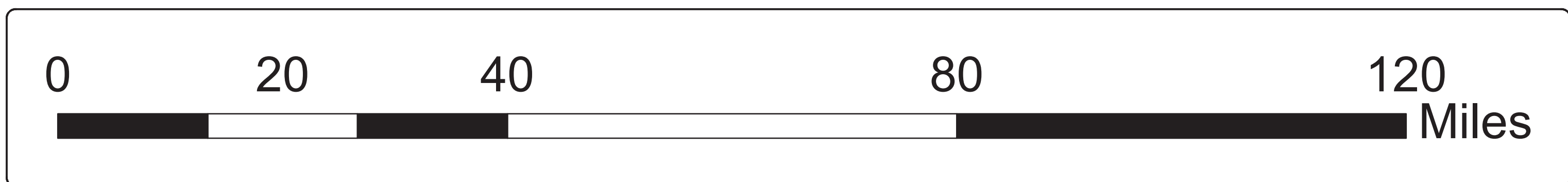
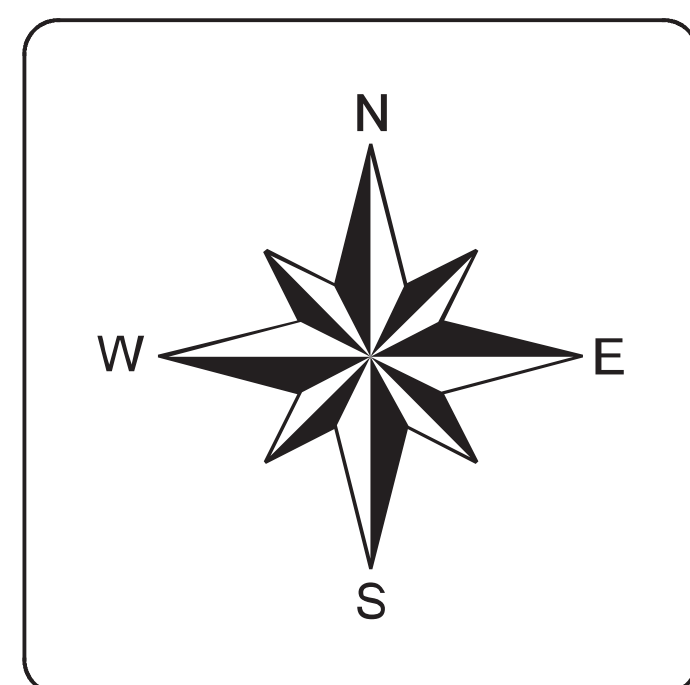
*No Change = Existing 100-year
100-year Increase = Existing 500-year/Potential Future 100-year
500-year Increase = Potential Future 500-year





Key to Features

- ★ County Seat
- Roadway Stream Crossing
- Major River
- Interstate Highway
- Regional County
- Future Flood Hazard (FutFldHazard)
- Trinity Regional Flood Planning Basin



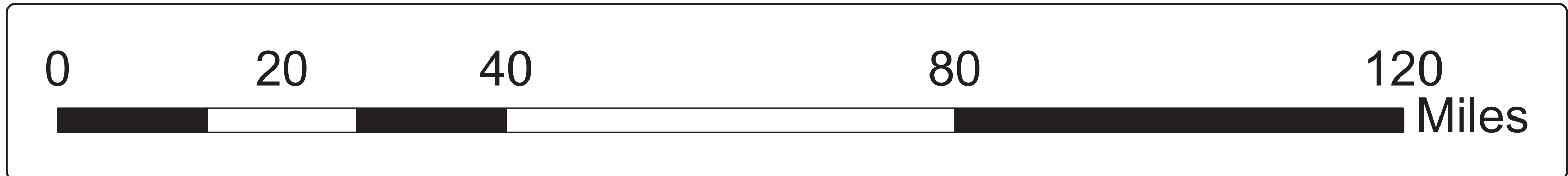
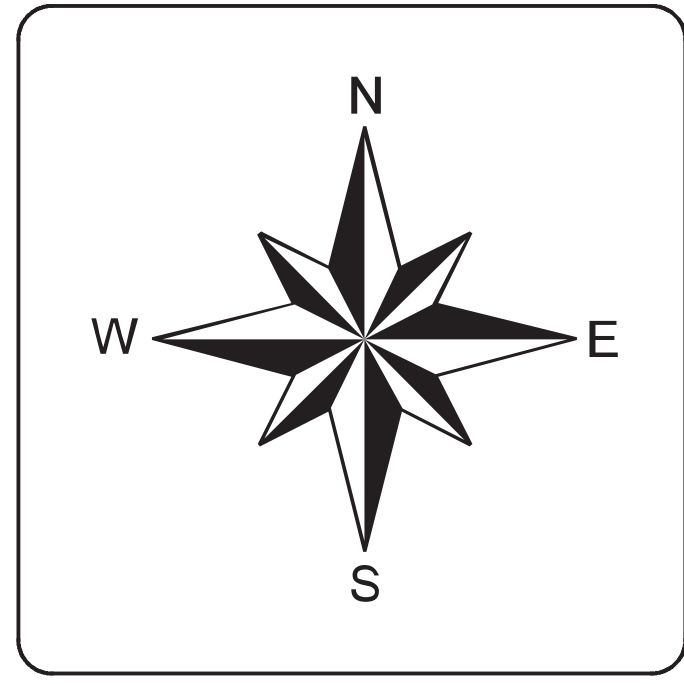
Region 3 - Trinity

**Map 11.1
Future Condition Flood
Exposure - Point Features**

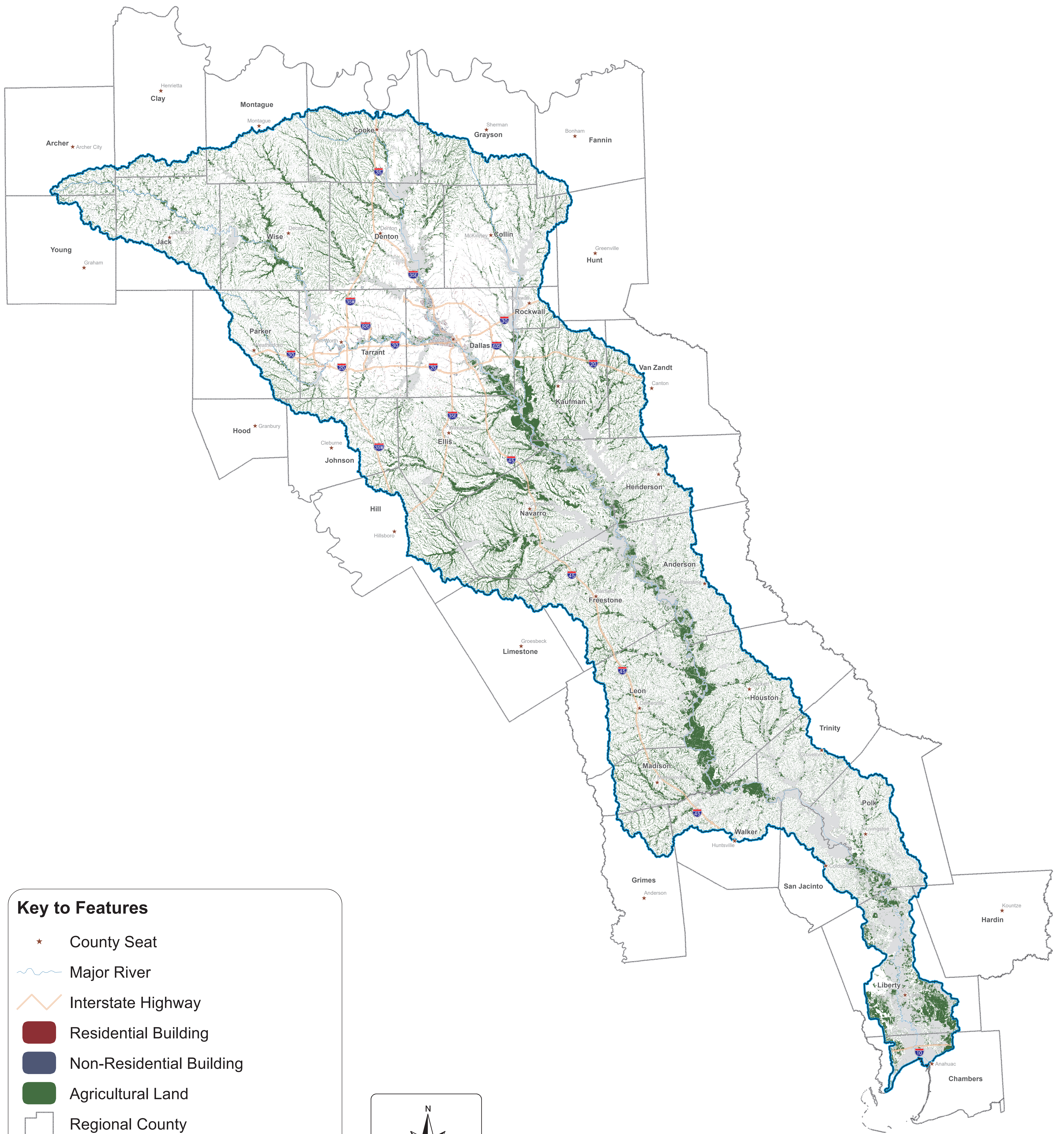


Key to Features

- ★ County Seat
- Roadway Segment
- Other
- ~ Major River
- Interstate Highway
- Regional County
- Future Flood Hazard (FutFldHazard)
- Trinity Regional Flood Planning Basin

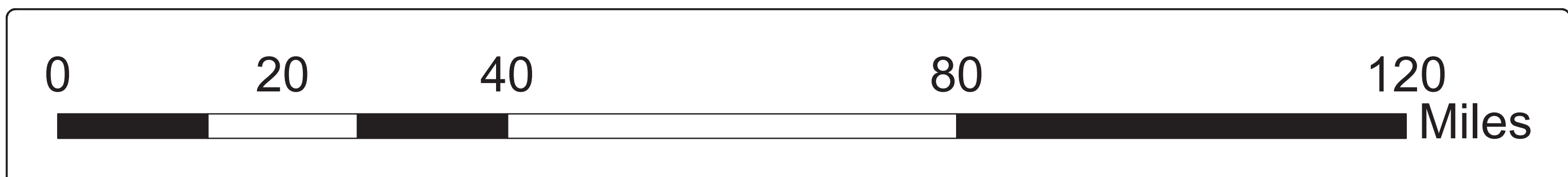
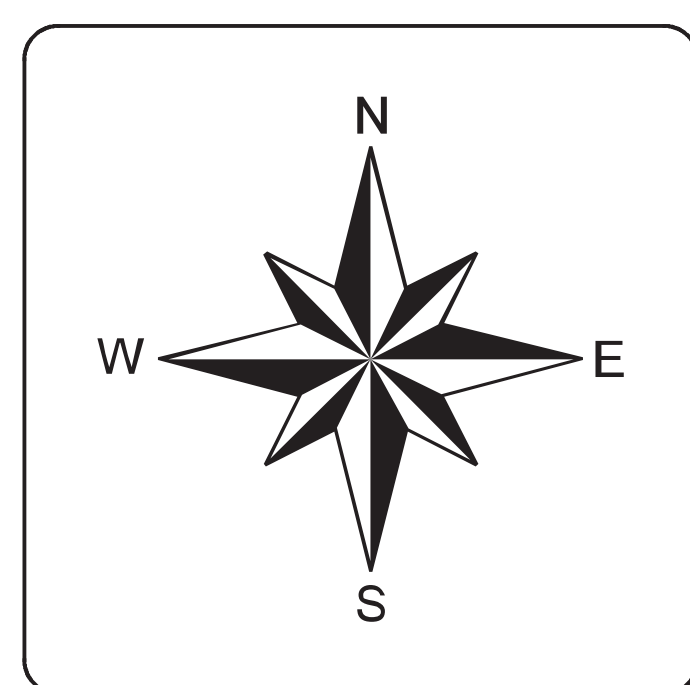


Region 3 - Trinity
Map 11.2
Future Condition Flood Exposure - Line Features



Key to Features

- ★ County Seat
- Major River
- Interstate Highway
- Residential Building
- Non-Residential Building
- Agricultural Land
- Regional County
- Future Flood Hazard (FutFldHazard)
- Trinity Regional Flood Planning Basin



Region 3 - Trinity

**Map 11.3
Future Condition Flood
Exposure - Polygon Features**